

Historic, Archive Document

Do not assume content reflects current scientific knowledge, policies, or practices.

LIBRARY

U.S. DEPT. OF AGRICULTURE

★ JUL 11 1920

U.S.D.

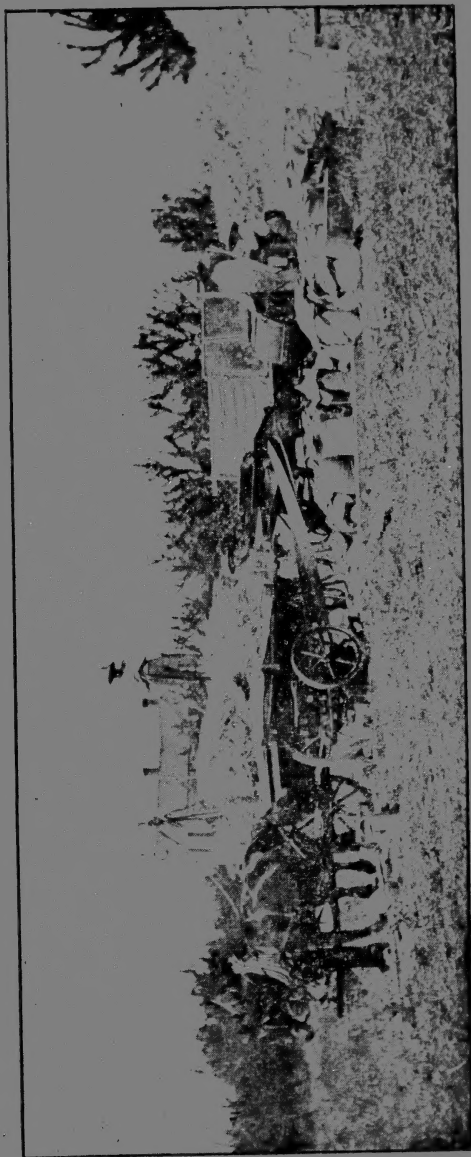
GILL BROTHERS
SEED
CATALOG
1912



LARGEST BEAN GROWERS IN THE
NORTHWEST

OREGON GROWN SEEDS
OUR SPECIALTY

PORTLAND OREGON ROUTE 1



THRESHING GARDEN SEEDS AT GILL BROS. FARM.

There are a few seeds that do not mature well in this locality but the majority produce, under our cool weather conditions, seeds that are of larger size and greater vitality than seeds grown elsewhere. While not generally considered a corn state, seed of corn grown here is larger and better developed than eastern seed of the same variety; of course the latest sorts do not mature well here.

Gill Bros. may be reached by phone— Telephone Tabor 2683.



RAYMOND W. GILL



EDWARD E. GILL

FOREWORD

JUST A LITTLE TALK WITH YOU.

DEAR CUSTOMERS AND READERS—

Our second annual catalog is now before you offering a splendid list of those vegetable seeds such as our long experience in market gardening has proven best for this climate. There is also a fine list of flower seeds and plants and the largest collection of Dahlia bulbs in the Northwest.

A great many of the seeds offered we grew on our farms near Portland, others such as cannot successfully be grown here have been secured of reliable houses with whom we have had long experience. Seed grown in this cool western climate matures slowly, producing a large, plump seed of fine quality, and the many letters warm with praise for the seeds we sent out last year, together with our own trials, convince us those seeds that can be matured here are far superior to Eastern stock.

We ask you to consider these conditions when buying seed of us:

1st. We are practical farmers, having had years of experience in growing vegetables for market and have always received top notch prices on our produce.

2nd. We grow most of our seeds as well as conduct trials of all kinds of vegetables and flowers. Therefore we very nearly know what we are selling and are able thru actual trial to find out and offer to you the very best of new varieties.

3d. We are able to give western experience in planting and cultivation of most vegetables and flowers and are always glad to assist our customers all we can in this respect.

4th We guarantee our seeds, bulbs and plants true to name and will be responsible to the amount of purchase price.

5th. We are not a cheap seed house and our aim is not and never will be to sell the cheapest seed. Good seed means careful selection and years of work in breeding up. This cannot be done without added expense. If you would produce the best you must plant from thoroughbred stock and after all the difference between the cost of good and cheap seed does not begin to compare with the difference in the crops.

ABOUT ORDERING.

Order Early as there is a heavy demand on some stock and it may be exhausted. **Remittance must accompany order** by money order, express order or bank draft. Stamps will be accepted to the amount of \$1.00 but above this we would prefer money orders, etc. Prices in this catalog by **Express or Freight** do not cover shipping expenses. E or F indicates express or freight.

All prices up to and including **one pound** include shipping expenses and for more only when indicated.

Be sure to give shipping instructions and write your name and address plainly on your order sheet.

Patrons will please notify us at once of any errors in filling orders as they will be gladly corrected by us.

OUR GUARANTEE.

We guarantee all the seeds, plants and bulbs we send out to be true to name and will be responsible for the amount of purchase price only.

We use the utmost caution to send out seeds that are of good vitality, but do not guarantee them to germinate as weather conditions, and the time and manner of planting so affect germination that even seeds of the best vitality may fail.

Those varieties marked with a star are Oregon grown seeds.

VISITORS

During the past summer we have received hundreds of visitors at our farm. Over 1000 people came to see our Dahlia field when in bloom. We are always glad to have those interested in flowers and vegetables pay us a visit. We will bloom about 500 varieties of Dahlias next fall, and about 300 of Roses in their season, besides many other flowers. The growth and manner of cultivation of vegetables under the dry farming system we use, is very interesting to visitors. **To get to our farm**, take Montavilla car and transfer to 89th and East Glisan, go two blocks east and four north to farm.

Address Gill Bros. Seed Co., Portland, Ore., Route 1.

VEGETABLES

ASPARAGUS

Plant roots in fall or spring, in rows 3 ft. wide and 1 ft. in rows.

Barr's Mammoth—Very large stalks with close round heads. Purple-tinted stalks. Pkt. 5c, oz. 15c, $\frac{1}{4}$ lb. 30c.

Columbian Mammoth White—This large-stalked strain produces white stalks above the surface. Pkt. 5c, oz. 15c, $\frac{1}{4}$ lb. 30c; 2-year roots 15c doz., \$1.25 per 100, postpaid. E or F. 100 for 65c, 500 \$2.50.

Conover's Colossal—The standard variety. Pkt. 5c; oz. 15c; $\frac{1}{4}$ lb. 25c; lb. 60c.

Palmetto — Large, thick, green shoots. Roots, two year, 20c a doz.; 100 for \$1.25; E. or F. 100 for 65c; 500 for \$2.50; seed pkt. 5c oz. 10c; $\frac{1}{4}$ lb. 25c; lb. 60c.

BEANS

Plant about May 1st for early beans, as soon as the ground becomes warm, in light loamy soil. Large seed beans require warmer weather to germinate than small beans. Cover from $1\frac{1}{2}$ to 2 inches deep, according to weather conditions. Never cultivate or hoe beans when the foliage is damp from dew or rains, as it will produce rust.

Challenge Dwarf Black Wax—The earliest wax podded bean. Curved pods of medium size of clear waxy white. Cooks very tender and free from strings. A heavy yielder, which we can recommend. Pkt. 10c, $\frac{1}{4}$ lb. 20c; lb. 35c; E. or F. lb. 25c.

***Burpee's Stringless Green Pod**—We consider this the best early bush bean we have ever tried. The pods are green, of good length, entirely stringless, tender and brittle and remain so until nearly ripe. This brown-seeded bean is both early and hardy and one of the richest flavored beans of all. It is well adapted to our climate and is a splendid market or garden bean. Per large packet 10c $\frac{1}{4}$ lb. 15c, lb. 30; by E. or F. 20c lb.

***Burpee's White Wax**—This bean is one of the finest appearing beans grown for market purposes. Its habit of growth is very upright and sturdy. The broad long pods are of a waxy lemon color and very free from rust. They will stand very early planting. The seed is pure white, making a fine shell-bean when ripe. Pkt. 10c, lb. 25c; E. or F. 15c per lb.

***Burpee's New Kidney Wax**—This new bean is superior to Wardell's Kidney Wax. The pods are six to eight inches long, solid and quite brittle if not allowed to become too

old. The pods are a pretty lemon yellow color and the whole plant is remarkably vigorous, prolific and free from disease. Price pkt. 10c, lb. 30c; By E. or F. 20c lb.

Tennessee Green Pod—This bush bean in our trials here last summer proved so prolific of large, long, flat tender pods of good flavor that we decided to add it to our list. It is the largest podded bush bean we have yet grown and is a very vigorous grower. It is a string bean of bright green color. For market and garden give it a trial. Price pkt. 10c, lb. 30; by E. or F. 20c lb.

***Dwarf Horticultural or Cranberry**—A rich flavored early bush bean generally used as a green shell bean, vigorous and prolific. Seed and pod striped and blotched with red on white. This class of beans should be more grown as they are very rich flavored either green or dry for winter. Pkt. 10c, lb. 30c; E. or F. 20c lb.

***Horticultural Pole** — Similar to Dwarf Horticultural except these are pole beans. A heavy yielder of large, broad and brittle pods. Splendid for snap or shell beans. Large pkt. 10c, lb. 25c; E. or F. 15c per lb.

Burger's Stringless Green Pod Pole or White Seeded Kentucky Wonder—Many consider this ahead of the Kentucky Wonder. Very prolific of extra long pods of dark green color. Seed are pure white. A fine bean for market or garden. Pkt. 10c, lb. 30c; E. or F. 20c lb.

***Kentucky Wonder Wax** — This grand new pole bean is a wax podded Kentucky Wonder and many think it is of better flavor. We believe it is a more vigorous grower and will yield

fully as heavy as the Kentucky Wonder. The pods are a light yellow, extra large, broad and long and cook very tender. We recommend this bean strongly. Comparatively early. Price Pkt. 10c, lb. 30c; by E. or F. 20c lb.

***Kentucky Wonder**—This is the old standby and is no doubt the heaviest yielder of all beans. Often sold as Asparagus bean. A string bean with long green pods and light brown seeds. It cooks tender and is a good all-round bean. Large pkt. 10c, lb. 25c postpaid; E. or F. 15c per lb.

BEETS

Plant in rows 3 ft. wide, with drill, April 1st to June 1st. Thin to 3 or 4 inches apart for table beets and 8 to 12 inches for mangles. For winter beets the later sowing is best.

***Early Model**—We consider this, after several trials, to be the best all-round table beet for this section. Its extreme earliness, perfect uniform shape, and rich coloring throughout, make it the best market and garden beet. Entirely free from strings or core. We have grown it for market and they have given fine satisfaction.

There is a big shortage on beet seed this year and prices are higher. Our own grown seed. Pkt. 10c, oz. 15c, $\frac{1}{4}$ lb. 50c, lb. \$1.75.

Detroit Dark Red—A fine beet for market or home garden. Roots of medium size, nearly round and very uniform, flesh blood red. Price pkt. 5c, oz. 15c, $\frac{1}{4}$ lb. 50c, lb. \$1.90.

Eclipse—A standard sort, very early of globe shape, good quality, dark crimson, zoned pinkish white. Pkt. 5c, oz. 15c, $\frac{1}{4}$ lb. 30c, lb. \$1.10.

MANGEL BEETS

Golden Tankard—A smooth, yellow-fleshed mangel of large size, growing largely above ground, making it easy to harvest. A good yielder. Pkt. 5c, oz. 10c, $\frac{1}{4}$ lb. 15c, lb. 45c.

***Mammoth Prize Long Red**—The standard red sort, with long roots often growing two feet long. Pkt. 5c, oz. 10c, $\frac{1}{4}$ lb. 15c, lb. 55c.

CABBAGE

Early varieties should be started in a cold frame in January or February or sowed the fall previous. They can be grown in a hotbed but this is not so good as the plants become tender. The earliest cabbage can be grown by sowing seed in August or early September, then transplanting to the field in October. For late, plant seed in open ground May 1st, transplant June 15 for fall and July 1st to 20th for winter cabbage, in rows $3\frac{1}{2}$ ft. apart, from 26 to 42 inches in the row, according to the richness of the soil and size of variety. Do not crowd them. They do best in a rich, loamy soil, with barnyard manure of any kind and applying 100 pounds of Utah land plaster to the acre.

Early Jersey Wakefield—We have a fine strain of this standard, best early cabbage. Either for market or garden you will do well to try this strain of seed. Pkt. 5c, oz. 35c, $\frac{1}{4}$ lb. 90c, lb. \$3.00.

Large Wakefield, or Charleston—

Similar to Jersey Wakefield, but half again as large and ten days later. Pkt. 5c, oz. 35c, $\frac{1}{4}$ lb. \$1 postpaid.

Early Winningstadt—Later than Jersey Wakefield good either for summer or winter. Small pointed heads and very sweet. Pkt. 5c, oz. 30c, $\frac{1}{4}$ lb. 75c.

***All Head Early**—A second early cabbage that is largely taking the place of the Flat Dutch, which is now considered among most growers as a back number. It is a sure header, flat in shape with light-green foliage. It is coming to the front as a kraut cabbage and for that purpose we highly recommend it, as the leaves are of fine texture and make fine kraut. It does not burst as easy as most cabbage from the rains. Pkt. 5c, oz. 30c, $\frac{1}{4}$ lb. 90c, lb. \$3.60.

***Glory of Enkhuisen**—This splendid cabbage we recommend as the best for a summer or early fall market cabbage as it matures larger heads in hot weather than any sort we have tried. It can also be planted

as a first early and will mature good large heads about the same season as Charleston Wakefield. The heads are quite deep, very tender and brittle and of the finest flavor. Even for a winter cabbage it heads fine and as a family cabbage it cannot be beaten. Our seed is from selected heads. Pkt. 10c, oz. 35c, $\frac{1}{4}$ lb. 90c, lb. \$3.50.

***Danish Ball Head, or Hollander—**The best main crop cabbage. Hard as a rock and holds its color after cutting better than other cabbage. We have seen it lay for three weeks without turning yellow. This makes it a fine shipper and a fine retail cabbage. The market requires a small, hard-headed cabbage to bring the best

sale and this variety meets this demand. It will mature heads in soil where other varieties fail. A cabbage sure to head if given half a show. Our strains are from selected heads. We have had many praises for our strain of this seed and those who grow for market should place their order with us. We grew a fine lot of this seed last summer. Pkt. 10c, oz. 25c, $\frac{1}{4}$ lb. 80c, lb. \$3.00.

Mammoth Rock Red—The best red cabbage, hard heading and large. Fine for cold slaws. Pkt. 5c, oz. 35c.

Perfection Drumhead Savoy—Curly, crinkled leaves, sweet and of fine texture. Pkt. 5c, oz. 35c.

BRUSSELS SPROUTS

Matchless—A new variety of good quality. Grow some sprouts, they

are fine towards spring. Pkt. 5c, oz. 25c postpaid.

CARROTS

Carrots may be planted from March to June. We prefer to plant from May 10 to 25, as they will then miss many of the spring weeds and will stand through the dry season better, making a better quality of roots. Those who plant any quantity should use a good drill, as it lessens the work and gives a more even stand. As soon as they are up use a wheel hoe, following this with a harrow tooth cultivator. Those who have no wheel hoe can run a line of land plaster along the row as soon as the carrots show, then follow with a harrow tooth cultivator. The plaster will enable you to see the rows clearly as well as fertilize. Plant in rows 3 ft. wide.

***Early Model, or Chantenay—**We consider this the best of the table carrots. The roots are every smooth, stump-rooted and thick at the tops.

The tenderest and sweetest carrot we ever grew. It will grow closer together in the rows and still mature more good-sized carrots than any other. In fact it is such a good yielder that many plant it for feeding purposes. It does not crack like some varieties. Decidedly the best carrot for market, either for sacking or bunching. Pkt. 5c, oz. 15c, $\frac{1}{4}$ lb. 50c, lb. \$1.90.

Danver's Half Long—The standard stock carrot, but we do not recommend it for table use as compared to the Chantenay. It is a heavy yielder and is largely planted. Our strain of it is extra good. Pkt. 5c, oz. 15c, $\frac{1}{4}$ lb. 50c, lb. \$1.90.

Large White Belgian—Long-rooted white stock carrot, very heavy yielder. Pkt. 5c, oz. 10c, $\frac{1}{4}$ lb. 30c, lb. \$1.00 postpaid.

CELERY

Golden Self-Blanching. The standard of the golden celeries and very popular everywhere. It is dwarf, compact in habit with thick, solid stalks which blanch a pretty waxen yellow. French grown seed of superior quality. Pkt., 10c; $\frac{1}{2}$ oz., 50c; oz. \$1.

Giant Pascal. Extra large growing sort for fall and winter use and planted very extensively. Blanching yellowish-white in color. Stalk tender and crisp. Pkt. 5c; oz. 25; $\frac{1}{4}$ -lb. 75c.

CHICORY

Large Rooted. Chickory does extra well in this climate and is considered by many as an excellent substitute for coffee. Plant like a carrot. Pkt. 5c; oz. 15c.

CAULIFLOWER

For early Cauliflower the same culture as for early cabbage may be used. For late cauliflower, in the descriptions of the varieties offered, the time of planting seed and plants is given. Cauliflower does best in a rich loamy soil, not a cold wet location. Plant 3 to 3½ feet in rows and 3½ feet between rows. As soon as the heads are large enough to soon be exposed to the light, tie or break the leaves carefully over the head to keep the light away from them.

Burpee's Best Early. This large, early cauliflower makes extra solid and perfect heads, very tender and brittle. We recommend this as the best cauliflower we have grown. For main crop the seed should be sown June 1st to 10th and transplanted July 20th to 25th. They will head during October. The seed is expensive, but will certainly pay you to plant. We have grown this variety for years with gratifying results. Pkt. 25c; ¼ oz. 85c; oz. \$3; ¼ lb. \$10.

Burpee's Dry Weather. This variety has exceptional merit in resisting dry weather and we find it the best for the first fall cauliflower as it withstands the dry weather. Similar to Best Early, but a little darker foliage. Can be planted for early spring or sow seed April 15th in open, transplant about June 15 for early fall or September cauliflower. Pkt. 25c; ½ oz. \$1.75; oz. \$3.00.

Veitch's Autumn Giant. A hardy tall-growing cauliflower, making extra large white heads. The leaves are dark green and being extra long can easily be broken over the heads

to protect them.

For years we have grown acres of this cauliflower for the Portland market and it has always given good satisfaction.

Stands handling and shipping better than Best Early or Dry Weather. Remarkably vigorous and thrifty. For late cauliflower, season of Oct., Nov. and Dec., sow seed in open bed May 1st, transplant July 1st to 15th. Pkt. 10c; oz. 50c; ¼-lb. \$1.50.

California Pearl. On trial at our farm last season this proved a splendid late cauliflower. Heading from October to January 1st. Continuing through a long season it does not crowd you to harvest. It is more self-protecting than most varieties, the leaves curling about the head. Pkt. 25c; oz. \$2.50.

Culture same as Veitch's Autumn Giant.

Mammoth White Broccoli. A late variety, season December to February. Long, tapering, heavy ribbed leaves, inner leaves curling about the head. While considered a broccoli, it is really only a late cauliflower. Brings fancy prices, but the grower must take chances on freezing in the northern part of the state. Pkt. 10c; oz. 50c; ¼ lb. \$1.25.

Early Large White French Broccoli. This variety planted in July heads the next spring in April and is largely sold in Portland as a cauliflower which it really is, broccoli being the name applied to extra hardy cauliflowers. Pkt. 5c; oz. 45c; ¼ lb. \$1.30.

SWEET CORN

The prices paid for first early corn the hill, or as some prefer and we think this gives the best results, early planting. For this planting use 4 or 5 seeds per hill and cover one inch deep. Space hills 3 feet and rows 3½ feet allowing two stalks to plant 20 inches between hills, and thin to one stalk, this gives all the stalks an even show. April 20 to May 1 is generally good season for

early corn, of course, depending, on the weather. May 15th to 25th is good for the later sorts, as they do not resist damp, cold weather so well as the early sorts.

Corn will not fill well unless the patch planted is blocked out; those planting small quantities should make the patch square, or nearly so. This will permit the pollen to blow down on the silk, fertilizing the ears. Early corn may be planted in succession up to June 25th.

***Gill's Portland Market.** We are having a great run on this, the largest first early corn we believe there is in existence. Long before the corn planting season was over last spring we were sold out of this seed. This corn is the result of several years careful selection and breeding up from an 8 and 10-rowed corn, called the Oakview Market. The ears now run 12 to 16 rows and are often one foot in length. They are as large as many of the second early sorts, while those who grew corn from this seed last spring, in our vicinity, were the first to market true sweet corn. The stalks are very short and small to carry such large ears; in fact, some of our visitors remarked "that they were all ears." It matures very even, the husks are thin, making the mature ears easy to detect. On trial with a dozen "Earliest of All" corn this came out in the lead with marketable ears. You will make no mistake to plant this corn for early garden or market. Seed of selected ears, 2 oz. Pkt. 10c; $\frac{1}{4}$ lb. 15c; lb. 30c. By E. or F. 20c lb.

***Gill's Early Market.** We have noticed among our Portland Market Corn some extra early ears maturing ahead of the others. We have made a selection of these with regard to earliness. We believe they will mature nearly a week ahead of the Portland Market, which, indeed, makes them very early. Seed limited. Pkt. 15c; $\frac{1}{4}$ lb. 20c; lb. 45c; By E. or F. 35c lb.

***Golden Bantam.** This corn was the sensation of the corn market last summer and will be one of the best sellers next season. Without doubt the sweetest, prettiest and most delicious corn yet introduced. The ears are of medium size, set two and three to a stalk. The kernels are of a rich golden-yellow color, which, together with its thin skin makes it superior for table use. It is about two weeks later than Portland Market, but stands extra early planting. Whether for market or home garden you cannot afford to miss planting this splendid corn. Seed from ears selected at our farm last summer.

For quality we think there is no corn superior, and on the market it took like wildfire. Price, Pkt. 10c; $\frac{1}{4}$ lb. 15c; lb. 35c. By E. or F. 25c lb.

Crosby's Early. A standard corn in the east and as sweet as any white corn. Small, deep grains, set close together, 12 to 18 rows, stalks medium. Follows the first early corns in season. Eastern seed only. Pkt. 10c; $\frac{1}{4}$ lb. 15c; lb. 30c. By E. or F. 20c lb.

***Early Premo.** A very hardy early corn, which stands early planting. In season follows the first early varieties. A remarkable producer of good ears. Pkt. 10c; $\frac{1}{4}$ lb. 15c; lb. 30. By E. or F. 20c lb.

***Howling Mob.** A large-eared, vigorous-growing, second early corn. Now considered to be the best corn for late use through this section. It can be planted in succession so as to have corn until frost. Stalks grow 5 to 7 feet, produces ears 12 to 16 rows and is of good flavor. Pkt. 10c; $\frac{1}{4}$ lb. 15c; lb. 30c. By E. or F. 20c lb.

Stowell's Evergreen. This is too late in our northwest climate to mature good ears, but is used extensively for fodder. Pkt. 10c; $\frac{1}{4}$ lb. 15c; lb. 25. By E. or F. 15c lb.

POP CORN

***White Rice.** The standard white sort.

***Red Rice.** Bright red grains of

fine quality. Price of both sorts, Pkt. 5c; $\frac{1}{4}$ lb. 10c; lb. 25. By E. or F. 15c lb.

CUCUMBERS

Plant 4 feet each way in rich loamy soil, from April 15 to June 1, 8 to 10 seeds to hill; thin to three good vines. Cover seeds one inch deep and press firm.

Davis' Perfect. This new cucumber is taking front rank for a garden or slicing cucumber. The most vigorous and thrifty grower we have tried. Produces a heavy yield of uniform, long, dark-green cucumbers. Holds its color good after marketing. Pkt. 5c; oz. 15s; $\frac{1}{4}$ lb. 40c; lb. \$1.25; postpaid.

Improved Long Green. Extra long, large cucumbers; fine for slicing, pickling or for sweet pickles when ripe. A very vigorous and healthy grower. Pkt. 5c; oz. 15c; $\frac{1}{4}$ lb. 40c; lb. \$1.25; postpaid.

Emerald. An intensely dark green cucumber with very smooth skin. It positively will not turn yellow when picked. Even when ripe remains dark green. Flesh is crisp, white and tender. Fine for shipping. Pkt. 5c; oz. 10c; $\frac{1}{4}$ lb. 30c; lb. \$1.00; postpaid.

Japanese Climbing. An exceptionally fine slicing cucumber, being very free from any bitter taste. Heavy yielder of large, long cucumbers.

Pkts. 5c; oz. 15c; $\frac{1}{4}$ lb. 40c; postpaid.

***Thorburn's Everbearing.** A splendid pickling cucumber, very vigorous, bearing through a long season. Medium sized and very uniform. This ranks among the best of the pickling sorts. Oregon grown seed. Pkts. 5c; oz. 15c; $\frac{1}{4}$ lb. 50c; lb. \$1.50. Eastern, Pkts. 5c; oz. 10c; $\frac{1}{4}$ lb. 40c; lb. \$1.25; postpaid.

***Boston Pickling.** The most generally planted for pickles through this section. Medium sized and a vigorous grower. Oregon seed, Pkt. 5c; oz. 10c; $\frac{1}{4}$ lb. 30c; lb. \$1.10; postpaid.

Snake Cucumbers. A great curiosity for fairs. Long cucumbers, 3 to 5 feet long, which curl like a snake. Pkt. 10c.

KALE

Culture, same as that of cabbage.

Dwarf German. Finely curled, low growing. Pkt. 5c; oz. 15c.

Tall Green, Scotch Curled. Tall and finely curled leaves. Pkt. 5c; oz. 15c.

***Thousand-Headed Kale.** Planted extensively for green feed during winter for stock. Our seed is grown from selected plants. Pkt. 5c; oz. 10c; $\frac{1}{4}$ lb. 15c; lb. 50c.

KOHL RABI

Early White Vienna. The best for table use. Kohl Rabi should be more grown, as it is a delicious vegetable, cooked like turnips. Transplanted

like cabbage in July; rows $3\frac{1}{2}$ feet wide and 1 foot in rows. Pkt. 5c; oz. 25c.

LEEK

Culture same as onions.

Monstrous Carentan. Large size.

The best. Pkt. 5c; oz. 20c; $\frac{1}{4}$ lb. 50c.

LETTUCE

Can be planted most any time of the year. Give head varieties plenty of room. Cover one-half to one inch deep.

New York. The finest head let-

tuce for flavor, large heads of dark green color, extra tender and brittle. Produce mild heads even in the heat of summer. During the winter months this variety is shipped to our

markets from California. While not early we recommend it for the garden or for main crop market lettuce. Don't leave this off your order if you are fond of good head lettuce. It is very slow to run to seed. Pkt. 5c; oz. 20c; $\frac{1}{4}$ lb. 60c; lb. \$2.00; postpaid.

Hanson. In our trials last summer of some thirty varieties of lettuce, New York and Hanson proved the best summer lettuce, heading solid, tender and sweet, even in the hot weather of last July. Too much can not be said in favor of this old standard. Pkt. 5c; oz. 20c; $\frac{1}{4}$ lb. 60c; lb. \$2.00; postpaid.

Crisp as Ice. We have decided to add this excellent lettuce to our list, after giving it a trial last season. It was the most uniform head lettuce in our grounds. Heads compact of a

bronze red color, maturing very even. A beautiful lettuce for the table and should become a good seller. Pkt. 5c; oz. 15c; $\frac{1}{4}$ lb. 60c.

Deacon. Stands hot weather well, heads light green outside, inner portion creamy yellow with fine buttery flavor. Pkt. 5c; oz. 15c; $\frac{1}{4}$ lb. 35c; lb. \$1.25.

California Cream Butter. A fine butter-head lettuce, rich in flavor, head large, fairly compact, outer leaves light green; heart a beautiful golden butter. Pkt. 5c; oz. 15c; $\frac{1}{4}$ lb. 35c; lb. \$1.25; postpaid.

The Keene. In our trials, the earliest head lettuce we had, forming compact heads of medium size which lasted well. A fine first spring head lettuce, which we recommend. Pkt. 5c; oz. 40c; $\frac{1}{4}$ lb. \$1.10.

LOOSE LEAF LETTUCE

Bon Ton. A very large, quick-growing, loose-leaf lettuce of the Simpson type; light green leaf, very broad and slightly wrinkled. We recommend this for family use. Pkt. 5c; oz. 20c.

Tomhannock. A beautiful loose-leaf lettuce with a reddish-brown border to the edge of the leaf. A quick grower of very tender, sweet

leaves, entirely free from bitterness. Can be eaten with relish in the patch. Pkt. 5c; oz. 15c.

Grand Rapids. The standard hot-house lettuce for forcing, also does fine in the open ground. Loose leaves of a light green color and fringed edges. Pkt. 5c; oz. 15c; $\frac{1}{4}$ lb. 35c; lb. \$1.25.

COS LETTUCE

Early White Self-Folding. Leaves yellowish white, crisp and tender;

forms sugar loaf heads; bleaches better if tied. Pkt. 5c; oz. 20c.

MUSK MELONS

Melons require a light, loamy, rich soil in an early location. Plant 4 by 7 feet, giving more room for larger varieties. Use 8 or 10 seeds to the hill; cover 1 to 1 $\frac{1}{2}$ inch deep. When the first leaves appear thin to two plants. Turn the vines with the row to permit cultivation.

***Emerald Gem.** Truly the gem of red-fleshed melons. The dark green fruit is of medium size, flattened at both ends. The flesh is thick, sweet and melting, with a rich, spicy flavor. An early melon, well adapted to this section. The melon has few nettings,

but our seed is saved from the more netted types, making them better for shipping. Pkt. 5c; oz. 15c; $\frac{1}{4}$ lb. 40c; lb. \$1.50; postpaid.

***Early Green Citron.** The earliest of all musk melons and will ripen where no others will. Flesh whitish green, but not as rich flavored as the later sorts. Pkt. 5c; oz. 20c.

***Original Pineapple.** We consider this the best of the green-fleshed melon for the northwest. The vines are very vigorous, producing a heavy yield of good-sized, heavily-netted

melons, which are somewhat elongated in shape. The meat is thick, sweet and spicy flavored. This early melon should certainly be more planted. Pkt. 5c; oz. 25c; $\frac{1}{4}$ lb. 50c; lb. \$1.75.

***Lewis' Perfection.** A heavy-ribbed, dark green melon, of large size, sometimes weighing ten pounds apiece; flesh thick and salmon colored. A good market melon and fairly early. Pkt. 5c; oz. 25c; $\frac{1}{4}$ lb. 75c.

***Livingston's Ohio Sugar.** This grand new melon, while not early, will ripen in this section. The melon is of medium size, nearly round, grey-green in color, flesh thick, dark green, exceptionally sweet. Considered a good shipper. Claimed by Mr. Livingston to be the sweetest melon

in existence. Pkt. 5c; oz. 35c; $\frac{1}{4}$ lb. \$1.00.

Banana. Long fruit, fifteen to twenty inches, flesh salmon colored. A curiosity as well as being good to eat. Pkt. 5c.

***Burpee's Spicy.** This new melon is of good size, fairly early, has good shipping qualities. The salmon colored flesh is very thick and exceptionally sweet and melting. This melon is well adapted to this climate. Pkt. 10c; oz. 35c; $\frac{1}{4}$ lb. \$1.00.

Netted Gem or Rocky Ford. The standard shipping melon, medium size, with small seed cavity; green meated, spicy and sweet. Will not ripen except in those localities well suited to melon culture. Pkt. 5c; oz. 10c; $\frac{1}{4}$ lb. 30c; lb. \$1.00; postpaid.

WATER MELONS

Plant 8 to 10 seeds in hills 6x6. Thin to 2 best vines. Turn vines with the row. Plant May 1st to 20th.

***Hungarian Honey.** A small round, thin-rinded melon with rich, red flesh. Extra early and sure to ripen even in the coolest season. Those who try it once will always have them in the garden for home use, they are so sweet. Oregon or Eastern seed, Pkt.

5c; oz. 15c; $\frac{1}{4}$ lb. 40c; lb. \$1.25.

Kleckley Sweets. A medium early melon, 18 to 20 inches long and 8 to 10 inches thick; one of the sweetest of watermelons. Good for near market. Pkt. 5c; oz. 10c; $\frac{1}{4}$ lb. 30c; lb. \$1.00.

Preserving Citron. Red-seeded, oval fruits, used for preserves. Pkt. 5c; oz. 10c.

ONIONS

A rich loam is best, fertilized with well rotted manure at least one year old. Sow seed in February or January if the condition of the ground and the weather will permit. Sow with drill in rows 12 to 16 inches apart; cover half inch deep. Hoe with wheel hoe as soon as they are up, but do not more than scalp the surface, as onions do not stand deep cultivation. Thin them to about 8 plants to the foot. It requires about 4 lbs of seed to the acre. Onions are peculiar in that they do well year after year on the same ground.

***Oregon Yellow Danvers.** This variety is largely planted through the northwest. The onions are large, half globe shape, with small necks;

early and heavy yielders. We handle a fine strain of this seed. Pkt. 5c; oz. 20c; $\frac{1}{4}$ lb. 70c; lb. \$2.00; postpaid.

Michigan Yellow Globe. Claimed to be especially adapted to rich, black lands. The bulbs are large and uniformly spherical, with very small necks; the largest diameter below the center of the bulb, of a rich orange yellow color; enormous yielders and splendid keepers. Pkt. 5c; oz. 20c; $\frac{1}{4}$ lb. 70c; lb. \$1.85.

Large Red Wethersfield. The standard red sort, of large size, flattened onions of purplish red; very productive and good shippers. Pkt. 5c; oz. 20c; $\frac{1}{4}$ lb. 50c; lb. \$1.75; postpaid.

PARSLEY

***Dark Moss Curled.** Dark green mosslike leaves. One of the very

best sorts. Pkts. 5c; oz. 10c; $\frac{1}{4}$ lb. 25c.

PARSNIPS

Culture same as carrots, except time of planting, which should be about May 1st.

***Gill's Tender Heart.** This strain is developed from seed we received over twenty-five years ago from an old resident in Portland, which proved so far superior to any other that we never ran out of the seed, but have been selecting from the best

from year to year. Unlike other parsnips the heart is tender, never tough; roots are smooth, hollow crown, thick and heavy at the top, tapering abruptly, making it easy to dig. We have the exclusive seed of this champion garden or market parsnip. Do not fail to try this parsnip, for it is unexcelled anywhere. Pkt. 5c; oz. 15c; $\frac{1}{4}$ lb. 30c; lb. 80c; postpaid.

PEAS

Plant as early as the ground can be worked in the spring. Peas will not reach perfection if planted after May first, although they will make a fair crop. They should be well rooted before warm weather begins.

***Early Morn.** This grand new pea is the earliest of the wrinkled peas; ahead of either Gradus or Thomas Laxton. The size of the pods is enormous for such an early pea, many pods containing eight to ten peas. This is an exceptionally heavy yielder and vigorous, growing three to four feet high. The coming money-maker in peas.

Imagine pods as large as Telephone peas and a few days ahead of Gradus. Those who planted this pea last year were surprised and are loud in their praise for it. The peas are dark green, large and of the finest flavor. Pkt. 2 oz. 10c; $\frac{1}{4}$ lb. 15c; lb. 40c; By E. or F. 30c lb.

***Thomas Laxton.** An extra early wrinkled pea only three or four days later than Gradus. Pods square at the ends, dark green color. The sweetest of the first early peas and a very heavy producer. Vines grow two to three feet high. True seed. 3 oz. pkt. 10c; lb. 30c; By E. or F. 20c lb.

***American Wonder.** This old

stand-by is too well known to need description. A dwarf, early growing pea; very productive and sweet as sugar in flavor. True seed.

We have a nice lot of seed. Those wishing 15 lbs. or more please write for prices. 3 oz. pkt. 10c; lb. 25c; postpaid. By E. or F. 15c lb.

***Telephone.** The standard main crop pea; tall growing habit, vine, pod and peas of light green color and enormous yielder and one of the best sellers on the market.

The seed we offer is true Telephone and can be relied upon. 3 oz. pkts 10c; lb. 30c; postpaid. By E. or F. 20c lb.

***Prize Winner.** This grand new pea makes the largest individual seed of any pea we ever saw. The pods are large, containing 8 to 10 of these enormous peas, which are of the finest quality. Grows to medium height. This is well worthy of a trial, either for home or market. 2 oz. pkt. 10c; lb. 40c; postpaid.

***Prodigious.** Enormous pods six to seven inches long, containing nine to ten peas of superior quality. A larger pea and more vigorous in growth than the Telephone. This pea makes a splendid market pea. Our stock is limited. 2 oz. pkt. 10c; lb. 35c; postpaid. By E. or F. 25c lb.

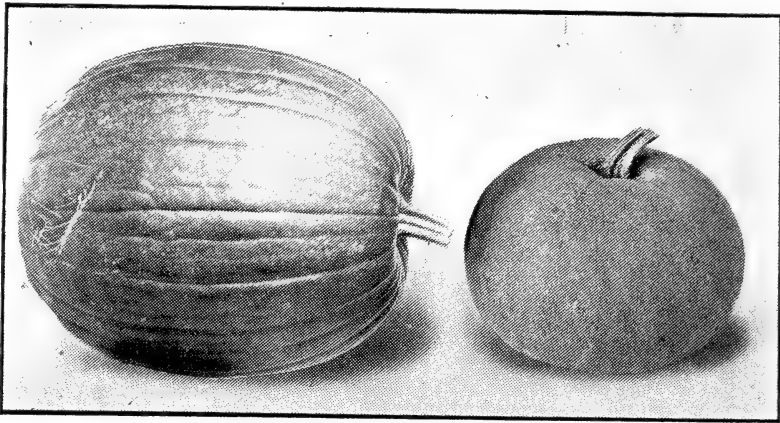
Peppers

Start plants in hot beds or in pots in a warm room in March. Transplant in open ground May 10 to 20, rows $3\frac{1}{2}$ feet wide, 2 feet in rows.

***Crimson Giant.** Decidedly the best pepper for the Northwest. Extra large peppers, three to four inches thick and five to six inches long;

of beautiful crimson when ripe. Their large size make them to fine for stuffing. It ranks among the earliest and most prolific. Similar to Chinese Grant. Our own grown seed. Pkt. 10c; $\frac{1}{4}$ oz. 15c; $\frac{1}{2}$ oz. 30c; 1 oz. 55c; $\frac{1}{2}$ lb. \$1.50.

PUMPKINS



Yankee Field

Winter Luxury Pie Pumpkin

Plant May 10 to 20 in rows 10 feet wide and 8 feet in the row; about 8 or 10 seed to the hill; thinning to two good plants. Turn vines with the row to permit cultivation. Use 200 lbs. Utah plaster to the acre, plowing it in.

***Winter, Luxury Pie.** This is fast becoming the standard pie pumpkin wherever it becomes known. We were among the first to introduce this pumpkin to the Portland trade and have many customers who will refuse every other. Medium sized, covered with heavy nettings, the flesh is thick, of rich yellow color and cooks fine grained without strings, and requires much less of eggs to make good pies than other kinds. A good keeper and very prolific. Our strain of seed produces fruit of rich, orange colored skin, while that usually offered is of lemon yellow type.

We have also bred up the size of this pumpkin. Pkt. 10c; oz. 15c; $\frac{1}{4}$ lb. 30c; lb. \$1.00; postpaid.

***Connecticut Field, or Jack O'Lantern.** The common field pumpkin grown for stock feeding and jack lanterns. Some prefer it for pies. Our seed is carefully selected for jack lantern shapes. Rich orange colored skin. Pkt. 5c; oz. 10c; $\frac{1}{4}$ lb. 20c; lb. 50c; postpaid. By E. or F. 40c lb.

Small Sugar. Small, deep orange yellow pumpkins, slightly ribbed, flesh sweet and fine for pies. Pkt. 5c; oz. 15c; $\frac{1}{4}$ lb. 30c.

Thanksgiving, or Improved Large Cheese. Heavy, thick meated pumpkins with deep salmon flesh, cooks fine grained and sweet; excellent for pies. Rather flat fruit, half orange color. A heavy yielder and fine for stock. Pkt. 5c; oz. 15c; $\frac{1}{4}$ lb. 40; lb. \$1.25.

POTATOES

Plant early kinds as early as the ground will work. Late varieties June 1st to 25th. Rows $3\frac{1}{2}$ feet wide, 20 inches in row. Cut to one or two eyes.

***Early White Albino.** Among the very earliest, pure white tubers, slightly flattened, flesh white and fine grained. This potato will mature early enough to permit second crop of cabbage, cauliflower, ruta bagas, etc.

***Early Michigan.** A few days later than the Early Albino, but a heavier cropper. Pure white, long, flat-shaped tubers of splendid cooking qualities. Fully as good a yielder as Early Rose and far more saleable, besides being earlier.

***Early Sunrise.** Long, white tubers of fine quality and a heavy yielder and is being largely planted instead of Early Rose.

***Beauty of Hebron.** Light pink potato of Early Rose form; a good yielder and noted for its splendid baking qualities.

***Big Cropper.** This enormous yielder, while yet little known on this coast, we think will soon be a leader. Tubers pure white, somewhat flat and of good length. It is early; in season about the same as Early Rose or Sunrise. The most vigorous grower we have yet seen in an early potato. It is of good quality and cooks in good shape. Growers will make no mistake in planting this potato.

*We can also offer in Early Potatoes the following varieties: Early Rose, American Wonder, Burpee's Extra Early.

Late Varieties

***Snow.** As a general rule the Burbank potato is considered to have

run out, and many are now looking about for other heavy yielding, late white potatoes. We have grown this for two seasons and are well pleased with it. Nearly every potato grows perfect in shape, roundish, slightly flattened, with snow-white skin and flesh. Produces very few unsalable potatoes. Can be planted closer than the Burbank and still produce good sized tubers.

*We can furnish the following late potatoes: Green Mountain Jr., Norcross, Burbank and Garnet Chilli.

PRICES.

By mail, postpaid, any variety, we offer at 25 cents per lb., or three lbs. for 60c.

By express or freight. Please drop us a card stating quantity you wish prices on.

RADISH

Can be sown most of the year around.

Crimson Giant. A crimson turnip-shaped radish that combines large size with extreme earliness. A splendid radish that does not go pithy very soon. Pkt. 5c; oz. 15c; ¼ lb. 30c; lb. 90c.

White Pearl. The best of the white radishes; roots five to seven inches long; of a beautiful pearly white color. Stands fine without going woody. Similar in shape to White Icicle, but superior in quality. Flesh tender, crisp and sweet. Pkt. 5c; oz. 15c; ¼ lb. 30c; lb. 90c.

..Cincinnati Market. An excellent radish of scarlet color; five to seven inches long; very thin, flesh crisp, brittle and of good flavor. Pkt. 5c; oz. 15c; ¼ lb. 25c; lb. 80c.

Bright Breakfast. Similar to the popular French Breakfast, but bright-

er in color. Small top; very early. Pkt. 5c; oz. 15c; ¼ lb. 25c; lb. 80c.

Early Scarlet Turnip, White Tipped. Turnip-shaped radishes, scarlet with white tips. A popular market radish sold by the vegetable men the year around. Excellent quality and extremely early. Pkt. 5c; oz. 15; ¼ lb. 25c; lb, 85c.

Long Bright Scarlet, White Tipped. A beautiful radish; clear, bright scarlet, the roots of which grow about six inches long, are tipped white. This is a fine radish of good quality. Pkt. 5c; oz. 15c; ¼ lb. 25c; lb. 80c.

Long Black Spanish. Long black winter radish. Sow in August. Pkt. 5c; oz. 15c; ¼ lb. 25c; lb. 80c.

Scarlet China. Roots of bright scarlet color; fine quality. Sow in September for winter use. Pkt. 5c; oz. 15c; ¼ lb. 25c; lb. 80c.

SALSIFY OR VEGETABLE OYSTER

Mammoth Sandwich Island. A good sort and most generally planted. Cul-

tivate same as carrots. Pkt. 5c; oz. 15c; ¼ lb. 40c; lb. \$1.25.

SPINACH

Sow in drills 16 to 20 inches apart; thin to 6 inches. For early spring use sow in the fall or sow in early spring for later use.

Savoy Leaved. An early sort generally used for fall sowing. Leaves crumpled. A hardy, rapid grower. Pkt. 5c; oz. 10c; $\frac{1}{4}$ lb. 15c; lb. 45c.

Victoria. A good long standing sort, with large, thick, dark green leaves, slightly crumpled. Good for market or garden. Pkt. 5c; oz. 10c; $\frac{1}{4}$ lb. 15c; lb. 45c.

Long Standing. Dark green, smooth leaves; very long standing. Pkt. 5c; oz. 10c; $\frac{1}{4}$ lb. 15c; lb. 45c.

SQUASH

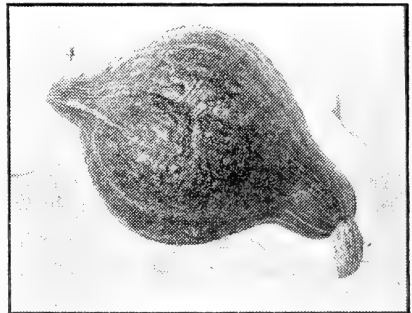
Plant from May 10th to 20th in hills 10 feet by 10 feet. 8 or 10 seeds to the hill. Thin to two strong vines.

Sow 200 pounds of land plaster to the acre and plow in.

***Delicious.** Mr. Gregory's late introduction; we consider the finest grained, dryest cooking and sweetest squash in cultivation. Of medium size, top shaped with greenish-black skin, flesh very thick, orange-colored with small seed cavity. Try this squash and be convinced that it is the best that grows. True seed of our own growing. Pkt. 10c; oz. 15c; $\frac{1}{4}$ lb. 35c; lb. \$1.25.

***True Hubbard.** The standard squash, and while we do not consider it equal to the Delicious in flavor, it is a heavier yielder and is better known in the market. We have a true stock of seed, carefully selected for color, shape and quality. Pkt. 5c; oz. 15c; $\frac{1}{4}$ lb. 40c; lb. \$1.25.

***Symes' Blue Hubbard.** Of light bluish-green color. This new introduction of Mr. Gregory, the squash man, convinced us last season that it would yield heavier than the Hubbard and the quality is as good or better. Similar in shape to the Hubbard. The



shell is very hard and will no doubt be a fine keeper. Our seed is grown from seed secured of Mr. Gregory, and has been given a very careful selection as to type. Pkt. 10c; oz. 20c; $\frac{1}{4}$ lb. 50c; lb. \$1.50.

Strickler's Summer Crookneck. Grows larger than the common sort. Fine for summer use. Pkt. 5c; oz. 15c; $\frac{1}{4}$ lb. 30c.

Mammoth White Bush Scallop. Early; large, pure waxy white skin, somewhat flattened. Pkt. 5c; oz. 15c; $\frac{1}{4}$ lb. 30c.

TOMATOES

Plant seed in box inside or in hotbed from Feb. 15 to March 1. Transplant May 10 to 20 in rows 6 feet wide and 5 to 6 feet in rows. A light loamy soil well cultivated and fertilized is best.

***Gill's Select Earliana.** The earliest, smooth, first-class tomato, and will ripen a full crop in the northwest states. Fruit a bright red, very smooth, deep from stem to blossom end; very solid with few seeds and of fine flavor. Sets plenty of tomatoes

that ripen in a short season. In selecting our stock seed in the season of 1910 we found one cluster of fruit which ripened even all over, not having any green color about the stem so common with this and many other varieties. Our seed is now all grown from this start, producing a more even colored Earliana than any yet offered. Pkt. 10c; oz. 45c; $\frac{1}{4}$ lb. \$1.25.

***Bonny's Best Early.** For those who wish to grow a really fine pack tomato for main crop this variety,

combining earliness, being about ten days later than Earliana, with smooth bright colored fruit of uniform shape, can be strongly recommended. A very heavy yielder of good-sized fruit. It will easily bring a better price than any other early kind of the same season. Pkt. 10c; oz. 45c; $\frac{1}{4}$ lb. \$1.25.

***Chalk's Early Jewel.** A reliable sort; while larger fruited than Bonny's Best, it is not quite so uniform in shape; a heavy yielder of good flavored fruit. Our seed is carefully

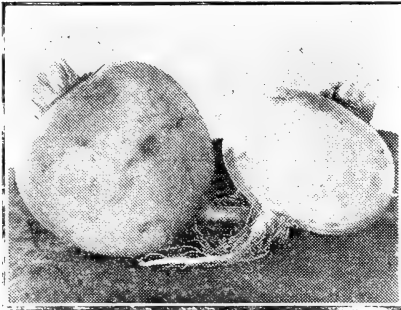
selected. Pkt. 5c; oz. 40c; $\frac{1}{4}$ lb. \$1.10.

Livingstone's Favorite. One of the best, largest, perfect-shaped, bright-red tomatoes. Very solid meated, of extra fine flavor, with few seeds; a good shipper, makes it a worthy tomato for main crop, especially for canning. Pkt. 5c; oz. 40c; $\frac{1}{4}$ lb. \$1.00.

***Yellow Pear.** Used for preserving, extra early and produces an abundance of yellow pear-shaped tomatoes. Pkt. 5c; oz. 40c.

TURNIP

Sow broadcast from Aug. 1 to 20.



Pomeranean White Globe. A large globe-shaped, smooth, white turnip. Good either for stock or table and resists the worm the best. One of the best keepers. Pkt. 5c; oz. 10c; $\frac{1}{4}$ lb. 25c; lb. 75c.

Extra Early White Milan. Among the earliest; roots clear white, smooth, flat and good quality. The best for early planting in the spring or for late fall sowing. Pkt. 5c; oz. 10c; $\frac{1}{4}$ lb. 30c; lb. \$1.00.

***Purple-Top White Globe.** Globe-shaped, very smooth, white turnips, with purplish red tops, making a pretty contrast. Sweet and tender and a good yielder. We have a fine strain. Pkt. 5c; oz. 10c; $\frac{1}{4}$ lb. 25c; lb. 75c.

White Egg. A quick-growing, egg-shaped, smooth, pure white variety with flesh very sweet, firm and mild. The best table turnip. Pkt. 5c; oz. 10c; $\frac{1}{4}$ lb. 25c; lb. 75c.

RUTABAGA

Sow in drills, 3 feet wide; thin to 6 inches apart. May be planted from June 15 to August 1. The later sowings make roots of the best quality.

***Improved Purple-Top Yellow.** We find this the best all-around Rutabaga. Produces nice, smooth globe-shaped roots free from side roots. The best for table use and very rich and productive for stock feeding. It is early and will mature good roots, planted late in the season. Good seed from selected roots. Pkt. 5c; oz. 15c; $\frac{1}{4}$ lb. 25c; lb. 75c.



TOBACCO

Burn a brush heap and sow the seed on this place as soon as it rains, early in March. Transplant about June 20 to 25.	Connecticut Seed Leaf. A good variety for the northern climate. Pkt. 5; oz. 25c.
-----------------------------------------------------------------------------------------------------------------------	-----------------------------------------------------------------------------------------

VEGETABLE ORANGE

Grow somewhat like a musk melon; small-sized, round-shaped, orange-colored fruit; fine for sweet pickles	and preserves; yields heavy in this climate. Pkt. 5c.
----------------------------------------------------------------------------------------------------------	-------------------------------------------------------

MISCELLANEOUS

Caraway. Used in confectionery, cakes and bread. Pkt. 5c; oz. 10c; $\frac{1}{4}$ lb. 25c.	Russian Flaxseed. An early maturing variety that does well here. Pkt. 5c; oz. 10c; lb. 30c.
--------------------------------------------------------------------------------------------------	----------------------------------------------------------------------------------------------------

*Dill. Used as a condiment and for flavoring cucumber pickles. Pkt. 5c; oz. 10c; $\frac{1}{4}$ lb. 25c.	*Sunflower. Mammoth Russian. Giant heads with large, gray seed. Pkt. 5c; oz. 10c; $\frac{1}{4}$ lb. 15c; lb. 30c.
----------------------------------------------------------------------------------------------------------------	--------------------------------------------------------------------------------------------------------------------------

Early Amber Sugar Cane. The earliest maturing variety. Pkt. 5c; oz. 10c; lb. 30c.

ORDER BY MAIL.

There is a decided advantage in ordering your seeds and plants by mail, express or freight, because you can study out your wants at leisure, then too, we guarantee our seeds true to name, and feel our responsibility in building up our trade by having satisfied customers. Should any mistakes occur in filling your order we will gladly correct it upon notice. We will gladly give our experience with different varieties or upon culture.

The garden seeds were all very good, as were the sweet peas and others. We are very well pleased and expect to order from you in the future.—Lucy Patty, Amity, Ore.

I got first premium at two fairs on stuff grown from your seed. Send me your next catalogue.—B. F. Wilkins, Montesano, Wn.

The seeds were all fine and very successful. I will tell all my friends, and send again next spring.—Mrs. E. N. Foster, Eagle Creek, Or.

I am well pleased with the seeds received from you. They were of excellent quality. I shall order from you whatever seeds I may need in the future.—J. B. Meyertholen, Morningstar, Nevada.

GILL'S CHOICE FLOWER SEEDS

ASTERS

Wonderful progress has been made with Asters in recent years and today they are one of our very best cut flowers. No flower garden is really up-to-date without them. Plant seed in box inside or cold frame or hot bed for early flowers about Feb. 15 to March 1, transplanting as soon as frost is over, or later sowings may be made for fall flowers. We list asters in three distinct classes.

COMET ASTERS.

These are the largest flowering sorts with long narrow petals, curving slightly back, those about the center curved and twisted. The flower is often five inches in diameter and carried on long stems. We offer fine seed of the following sorts:

***Crego Giant White.** Large pure white. Pkt. 10c.

***Crego Giant Pink.** Large shell pink. Pkt. 10c.

***Vick's Pink Micado.** Lavender pink, large. Pkt. 10c.

BRANCHING ASTERS.

Tall plants of branching habit, bearing good-sized flowers, petals somewhat quilled and incurved. This type makes good stiff, long stems and stand handling best.

Non Lateral Branching White. Extra fine. Pkt. 10c.

Non-Lateral Branching Rose. Fine form. Pkt. 10c.

Rose King. Long needle-like petals, rose color. Pkt. 10c.

Violet King. Same form, of violet lilac color. Pkt. 10c.

Late Upright. Crimson, very unusual color. Pkt. 10c.

Vick's Cardinal. Medium size, bright cardinal. Pkt. 10c.

Royal Purple. Early, very free blooming. Pkt. 10c.

IMPERIAL OR POMPON ASTERS

These are quite dwarf, but bloom full of small, double compact flowers. The flowers are held upright on stiff stem. This class is very fine for bedding and are of easy culture.

Imperial Daybreak. Shell pink, fine. Pkt. 10c.

Imperial Purit^r. Pure spotless white. Pkt. 10c.

Imperial Rose. Light rose. Pkt. 10c.

Imperial Lavender. Very effective. Pkt. 10c.

***Imperial Yellow.** Cream color. Pkt. 10c.

Imperial Salmon. Very clear light salmon. Pkt. 10c.

***Miss Roosevelt.** Primrose, changing to flesh color. Pkt. 10c.

MIXED ASTERS.

***Gill's Fancy Mixed.** We tested some thirty varieties of new and standard asters last summer in our trial patch. Many of the highest priced sorts were included. The seed from all of these we offer in this splendid mixture. Pkt. 5c, $\frac{1}{4}$ oz. 25c, oz. 90c.

Giant Ostrich Plume Mixed. A mixture of giant flowering sorts. Pkt. 10c.

AGERATUM

Beautiful annuals bearing flowers in dense clusters.

Mexicanum. Light blue, 20 inches high. Pkt. 5c.

Dwarf White. 8 inches high. Pkt. 5c.

Mixed. Pkt. 5c.

ALYSSUM.

Sweet. Hardy annual, blooming with white flowers in early spring. Pkt. 5c.

BALSAM.

Hardy annuals growing one to two feet high. Plant inside or in hotbed in March, plant out after danger of frost is over.

Double White. Pure white. Pkt. 10c.

Double Red. Dark red. Pkt. 10c.

Mixed Double Dwarf. About one foot. Pkt. 5c.

Mixed Double Tall. About two feet. Pkt. 5c.

CALLIOPSIS.

Showy annuals, of easy culture, blooming all summer. Sow in April where they are to bloom.

Crimson King. Crimson garnet. Pkt. 5c.

Golden Ware. Golden yellow with brown centers. Pkt. 5c.

Choice Mixed. All the colors. Pkt. 5c.

CANTERBURY BELLS.

Sow seed in open during April, if the weather is dry, keep seed bed sprinkled or cover with paper until germinated. Transplant in July to permanent place. We offer the cup and saucer type in a fine mixture Pkt. 10c.

CANDYTUFT.

Sown in the fall, will flower in early spring; sown in April will bloom in June. Hardy and of easy culture.

Empress. Finest white. Pkt. 10c.

Crimson. Rich deep shade. Pkt. 5c.

Lavender. Delicate rosy lavender. Pkt. 5c.

Mixed Colors. Pkt. 5c.

CARNATION.

Marguerite Mixed. All colors of this class. Pkt. 5c.

Giant Marguerite. Giant flowers, two to three inches across. Pkt. 10c.

ROYAL SWEET SULTANS.

Beautiful, sweet-scented, artistic flowers, borne on long stems. Fine cut flowers. Sow early in the spring. Finest Mixed. Pkt. 5c.

MORNING GLORY.

Climbing Mixed. All the colors, 15 ft. Pkt. 5c.

Dwarf Mixed. All colors, 1 ft. Pkt. 5c.

COSMOS.

Hardy annuals which, planted after danger of frost in the open, will bloom in the late fall when flowers are scarce. Fine cut flowers.

Mammoth Perfection Cosmos. A strain of extra large flowers, offered in the following colors:

Crimson. Rich and deep. Pkt. 10c.

Lady Lenox. Giant pink. Pkt. 10c.

Pure White. Pkt. 10c.

Mixed. All the colors. Pkt. 5c.

Extra Early Cosmos. Sown in April will bloom in July and August. Mixed colors. Pkt. 5c.

DELPHINUM.

Sow inside or in hotbed, plant out in May to permanent place about 2 ft. apart in the row.

Gold Medal Hybrids. Shades of light blue. Pkt. 15c.

Belladonna. Turquoise blue. Pkt. 25c.

Finest Double Mixed. Great variety of colors. Pkt. 15c.

PINKS.

Biennials growing about a foot high. Fine for borders.

China Pinks. Mixed, double flowers. Pkt. 5c.

Diadem Pink. Beautiful double, of many colors. Pkt. 5c.

Snowball. Large double white. Pkt. 5c.

Fireball. Blood red, good contrast to the above. Pkt. 5c.

Single Royal Pinks. Improved single Japanese. Pkt. 5c.

CALIFORNIA POPPY.

Hardy annual, sow in open during April.

Single Mixed. All the colors. Pkt. 5c.

Double Mixed. All the colors. Pkt. 5c.

GOURDS, ORNAMENTAL.

Culture, similar to cucumbers or musk melons.

Fine Mixed. Several sorts in mixture. Pkt. 5c.

HELIOTROPE.

Start indoors, plant out in May. Half hardy.

Lemoines Giant. Double the size of the old sorts. Pkt. 10c.

HOLLYHOCK.

This old-fashioned flower is taking front rank now for back-ground effects. A hardy perennial, blooming very little the first year.

Double Sorts

Separate colors in orange, maroon, red, rose, salmon rose, white and yellow. Any color 10c a pkt.

Choice Mixed. All colors. Pkt. 5c.

Allegheny Mixed. Double fringed blooms. Pkt. 5c.

Single Mixed. All colors. Pkt. 5c.

LARKSPURS (Annual).

Can be started inside or planted in the open May 1st. Finest mixed, pkt. 5c.

LOBELIA.

Desirable for pots, edges or hanging baskets.

Crystal Palace Compacta. Best dark blue. Pkt. 10c.

Prima Donna. Crimson maroon. Pkt. 10c.

White Gem. Snow white. Pkt. 10c.

Mixed Compact Varieties. All colors. Pkt. 5c.

MARIGOLDS.

Annuals of easy culture.

Dwarf French. Mixed, all colors, double. Pkt. 5c.

Large African. Mixed double, orange and lemon. Pkt. 5c.

MIGNONETTE.

Keep up a succession of flowers by sowing in April and July. Best mixed. Pkt. 5c.

FORGET-ME-NOTS.

Robusta Grandiflora. Large, bright blue flowers. Pkt. 5c.

NASTURTIUMS.

Sow in April in rows, thin to 2 or 3 inches apart.

Dwarf Varieties.

Bronze. Bronze orange. Pkt. 5c, oz. 15c.

Golden King. Rich, golden yellow. Pkt. 5c, oz. 15c.

King Theodore. Crimson maroon, dark foliage. Pkt. 5c, oz. 15c.

Pearl. Creamy white. Pkt. 5c, oz. 15c.

King of Tom Thumbs. Dark scarlet, dark leaves. Pkt. 5c, oz. 15c.

Finest Mixed. All colors. Pkt. 5c, oz. 10c, $\frac{1}{2}$ lb. 30c, lb. 75c.

Tall Varieties.

Crimson. Rich and velvety. Pkt. 5c, oz. 15c.

King Theodore. Crimson maroon, dark foliage. Pkt. 5c, oz. 15c.

Orange. Pure orange. Pkt. 5c, oz. 15c.

Pearl. Creamy white. Pkt. 5c, oz. 15c.

Rose. Lovely shade of ruby rose. Pkt. 5c, oz. 15c.

Juniper. Giant golden yellow. Pkt. 5c, oz. 15c.

Spitfire. Fiery scarlet. Pkt. 5c, oz. 15c.

Grant of Battles. Sulphur yellow blocked red. Pkt. 5c, oz. 15c.

Crown Prince of Prussia. Ruby garnet. Pkt. 5c, oz. 15c.

California Giants Mixed. All colors. Pkt. 5c, oz. 15c, $\frac{1}{2}$ lb. 25c, lb. 75c.

Ivy Leaved Tall Mixed. Pkt. 5c, oz. 20c, $\frac{1}{2}$ lb. 50c.

PANSIES.

May be sowed early inside or planted in the open in April. Sown in July and August will make good plants for the next spring.

Steele's Mastodon Pansies. Probably nowhere in the world is there a larger flowering strain of pansies than this, which is grown in Portland, Or., by Mr. Steele, who for 15 years has made a study of pansies, developing this strain of mammoth flowers. These flowers run 3½ to 4 inches in diameter and are of splendid colors in great variety. While the seed is more expensive you will be well repaid to plant it. Pkt. 25c.

***Gill's Giant Mixture.** Grown by ourselves from larger flowering sorts. This is a reliable mixture of many good colors. Pkt. 10c.

PETUNIA.

Defiance Largest Flowering. Flowers often five inches in diameter, fringed, with open throats. Colors varied and indescribable. Pkt. 15c.

PHLOX DRUMMONDI.

Annual. Sow after danger of frost, in the open.

Mixed Colors. Free flowering. Pkt. 5c.

Mixed Grandiflora. The largest flowers. Pkt. 10c.

POPPIES.

May be sown in the fall or early spring. Poppies are easy culture and very effective flowers.

Single Sorts.

***Gill Mixed Shirley.** All colors and hues. Pkt. 5c.

Danish Cross. Scarlet with white spot forming a cross. Pkt. 5c.

The Bride. Pure white. Pkt. 5c.

Admiral. White with band of scarlet around the top. Pkt. 5c.

Tulip Poppy. Rich glowing scarlet. Pkt. 5c.

Miss Sherwood. Satiny white, upper half chamois rose. Pkt. 5c.

Double Sorts.

Cardinal. Fringed flowers, cardinal red. Pkt. 5c.

Fairy Bush. Elegantly fringed, white tipped rose. Pkt. 5c.

Shell Pink. Soft sea shell pink. Pkt. 5c.

White Swan. Immense fringed flowers, white. Pkt. 5c.

Carnation Flowered. Double, fringed, mixed colors. Pkt. 5c.

Peony Flowered. Globular flowers like a peony. Pkt. 5c.

Perennial Poppies.

Iceland Poppies. Mixed colors. Pkt. 10c.

Oriental Poppies. Deep crimson, with black blotch. Pkt. 10c.

SALPIGLOSSIS.

Sow indoors for early, or can be sown outside after danger of frost. Large flowering mixed. Pkt. 10c.

SALVIA.

Sow indoors in March, plant out in May.

Splendens. Bright scarlet, 3 ft. Pkt. 5c.

Patens. Intense blue flowers. Pkt. 15c.

SCARLET RUNNER BEANS.

A fine climber for porches or trellis. Pkt. 5c, ½ lb. 25c.

SCABIOSA OR MOURNING BRIDE.

Sow outside after danger of frost. **Large Flowering Mixed.** Pkt. 5c.

SWEET PEAS.

Sweet peas are today considered one of the leading flowers. Can be planted in trenches in November, covering lightly with soil or pulverized manure. This method will produce flowers in June. Spring sowings should be made as early in the spring as the ground can be

worked, even February is not too early. The Spencer type is by far the best, being large, freer blooming, and more artistic.

SPENCER SWEET PEAS.

***Asta Ohn Spencer.** Charming soft lavender. Pkt. 10c.

Apple Blossom Spencer. Color of apple blossoms. Pkt. 10c.

Countess Spencer. Soft rose pink. Pkt. 10c.

Ethel Roosevelt. Crimson flakings on cream ground. Pkt. 15c.

Flora Norton Spencer. Rich lavender. Pkt. 10c.

George Herbert. Bright rosy carmine, fine. Pkt. 10c.

***Helen Lewis.** Crimson orange, wings orange rose. Pkt. 10c.

***King Edward Spencer.** Deep carmine scarlet. Pkt. 10c.

***Marie Corelli.** Bright rosy carmine. Pkt. 10c.

***Othello Spencer.** Rich deep maroon. Pkt. 10c.

Primrose Spencer. Primrose yellow. Pkt. 10c.

***Senator Spencer.** Claret stripes on heliotrope ground. Pkt. 5c.

***W. T. Hutching.** Cream-yellow edged blush pink, largest. Pkt. 15c.

Burpee's White Spencer. Waxy white of large size. Pkt. 10c.

Mixed Spencers. A grand mixture. Pkt. 10c.

***Gill's Rainbow Mixture.** We feel confident this grand mixture of our own krowing, contains more shades than any mixture sold. For years we have been securing mixtures from different houses, and growing

them together. It contains nearly half Spencer peas. Visitors who saw them in bloom, said they had never seen so many colors in one mixture, nearly 100 different shades being in evidence. We have many fine reports from this seed. Pkt. 5c, oz. 10c, $\frac{1}{4}$ lb. 25c, lb. 75c, postpaid.

STOCKS.

Large Flowering. Mixed, ten week stocks. Pkt. 5c.

SUNFLOWER.

New Miniature Mixed. Numerous small flowers. Pkt. 10c.

Chrysanthemum Flowered. Double, rich golden yellow. Pkt. 5c.

SWEET WILLIAM.

This hardy perennial is coming back into favor.

Single Mixed. All colors. Pkt. 5c.

Double Mixed. Large size, many colors. Pkt. 10c.

VERBENA.

Soak seed in warm water, sow in May and will bloom in August.

Fordhook Famous Mixed. Largest and best strain. Pkt. 10c.

ZINNIAS.

Sow in open ground as soon as it becomes warm.

Large Flowering Mixed. Dwarf plants producing large flowers of many colors. These flowers will last for 6 weeks after opening. Pkt. 5c.

Double Fringed Mixed. A new type with fringed petals. Pkt. 10c.

BULBS

DAHLIAS.

Culture.

Dahlia bulbs should be planted from April 20th to May 10th, according to the conditions of the soil and weather. The bulbs are shaped much like sweet potatoes, with eyes only near their junction with the old stalk and should be planted on about one-third slant, the eye or sprout nearest the surface. Plant about five inches deep, covering only about 2 inches, then fill after the sprout is above ground. As soon as the sprouts have made a few inches growth remove all but one of the strongest, cutting the others off below the surface. Be sure to give them plenty of room, especially if so situated that you cannot water them. We plant for field culture 4 by 6 feet, however, if they receive frequent watering they may be planted 3 by 4 feet. The flowers should be cut, not broken, frequently and never allowed to dry on the bushes. As soon as the plants have made much growth they should be hoed and worked, very shallow, however, or they will be injured. If unwatered a dust mulch should be established over the whole surface; if watered the surface should be stirred after each application of water.

Classes.

There are several classes of dahlias which will be found classified in our list. Dahlias originated in Mexico and were named Dahlia in Spain after a Swedish botanist by the name of Dahl.

Single Dahlias. No doubt the oldest class. One row of petals with large open centers.

Show Dahlias. These have double ball-shaped flowers with cupped and quilled petals. An old class that is still very popular. Many prefer it to all other classes.

Cactus Dahlias. This class has brought the dahlias to the front very rapidly. Petals run from narrow to medium width, long and pointed, some standing out straight, some slightly reversing while others, the newest type, curve to the center. In form resembling a cactus or chrysanthemum.

Decorative Dahlias. Broad, flat petals of large size, generally reversing slightly towards the stem. In this and the paeony class are found the largest blooms.

Fancy Dahlias. These are simply stripped and spotted flowers which may belong to either show or decorative classes.

Peony-Flowered Dahlias. These are semi-double flowers with long, broad, slightly twisted petals. However, those of the Cactus Peony are narrow-petaled.

Pompon. Miniature show dahlias of perfect form.

Ten Reasons Why You Should Plant Dahlias.

1. The best decorative flower in existence and especially unequalled for table effects.
 2. They are the showiest flowers in existence.
 3. Free blooming plants that flower from July 1st till frost, when others flowers are scarce. We picked our last bouquet last season on November 10th.
- .. You have more variations in color in the dahlia than any other flower.

5. They are easy to grow, requiring little trimming and spraying.

6. They last finely as a cut flower.

7. In the different varieties may be found the brightest tones and the softest hues and the most charming blends known in flowers.

8. Their brilliant colors, so contrasting, give the best effects by lamp-light.

9. With so many classes you can have several different sorts of flowers all in one species.

10. They make fine hedge effects. Some plant them between roses and thus keep up a continuation of flowers through the whole season.

We guarantee our dahlias true to name, but sometimes accidents may occur, in which case we will send a new bulb the following season without expense to you.

Our bulbs are field grown with good eyes.

Dahlia orders will be filled during March, April and May.

Dahlia Collections.

These collections represent the best values in choice varieties, chosen with regard to color. Name attached to bulb, no two alike. Prices post-paid.

No. 4. 12 Cactus Dahlias, our selection, \$1.50; 6 for 80c.

No. 5. 6 Decorative Dahlias, our selection, 60c.

No. 6. 6 Show Dahlias, our selection, 60c.

No. 7. 6 Show Dahlias, 6 Decorative, our selection, \$1.10.

No. 8. 12, mixed classes, \$1.20; 6 for 60c.

Discount on Dahlias.

Anyone ordering over \$5 worth of dahlias may select dahlia bulbs to the value of 10 per cent. of amount of order, free. This does not include collections.

Dahlia Seed.

Choice seed saved from perfect flowers of Cactus, Show, Decorative and Fancy Dahlias, from plants grown in our field. Dahlias from seed are the source of new varieties and much interest is established in growing them. Start in hotbed, plant out in May. Pkt. 25c.

NEW CACTUS DAHLIAS OF GREAT MERIT.

Aurora. A grand blending of colors, shading through tints of pink, amber, rose and cream. Large flowers of fine form, with incurved petals. 50c each.

Amber Queen. A bold, large flower of rich amber suffused with scarlet. Very free blooming. 75c each.

Duchess of Hamilton. Light sulphur yellow, suffused light rose on outer petals, large and free. Certainly a grand delicate flower. 50c each.

Dornrorshen. A grand new Dahlia coming in many variations of color on the same plant. Carmine to brilliant red, shading to delicate pink. Many blooms shading out to almost white at the tips, while others are self colored red. Long petal incurved and quilled. 75c each.

Foxhunter. A beautiful flower of bright scarlet petals, long, narrow and straight. Flowers of good size and a free bloomer. 75c each.

Goldland. One of the best yellow Cactus to date. A rich primrose yellow, perfect form and free blooming. 75c each.

Gondola. Clear, rosy pink with long, narrow, incurved petal resembling a chrysanthemum in form. This is the best pink Cactus we have yet seen. 75c each.

Lurania. Blended orange, terra cotta, cinnamon; petals twisted and incurved, overlapping to the center, truly an unusual Dahlia. 50c each.

Mrs. McMillian. One of the freest

bloomers in our field. Yellowish white at base, passing to purplish mauve, suffused with shade of pink in the body of the flower. Each 50c.

Mrs. Henry Wirth. A grand, free-blooming Dahlia; of rich geranium red, fine form, one of our best red Cactus. 50c each.

Mauve Queen. Long, tubular, incurved petals, a pleasing shade of clear mauve. Each 75c.

Model. A most effective flower, clear waxy yellow, with a delicate plum blush over the tips. Each 75c.

Rev. A. T. Bridge. One of the finest Cactus to date. A bright, clear yellow, tipped and suffused with a bright, deep rose pink, beautifully incurved with a whirl in the center. Each 75c.

Rheinkonig. The best by far of any white Cactus yet introduced. Large flowers of a clear waxy white, borne upright on long stiff stems. Each \$1.00.

Rosa Starr. A large, perfect flower with long, tubular incurved petals,

a deep rose pink. The grandest pink Cactus to date. Each 75c.

Tressie. Immense blooms, brilliant, deep scarlet, petals slightly incurved, the center petals have a peculiar side twist that give it a very artistic effect. This is without doubt one of the best red Cactus to date. Each 75c.

Wodan. Enormous blooms, often over 7 inches in diameter; semi-incurved, tubular petals, of delicate salmon rose color, shading to old gold in the center. Each \$1.00.

Wolfgang Von Goethe. Large, free flowering sort, with perfect blooms of rich apricot overlaid with carmine shadings. Attracted much attention last season. Each \$1.00.

Vater Rhein. Flowers often 7 inches across, on long stems well above the foliage, petal broad, curled and twisted; yellow suffused with salmon rose. It is very recent introduction and one of the best. Each \$1.00.



Complete List

GILL'S NEW AND STANDARD CACTUS DAHLIAS.

- Aegir.** Rich cardinal red, twisted petals, free bloomer. 35c.
- Amos Perry.** Early, free, large, glowing fiery red. 25c.
- Alpha.** Creamy white, spotted and striped reddish purple. 25c.
- Amazone.** Large, glowing, amaranth red, suffused purple. 50c.
- Amber Queen.** New, large, rich amber, suffused scarlet. See p. 75c.
- Auna Borneman.** Free, early, chamois passing to light rose. 25c.
- Aristed Gurther.** New, long narrow petals, Mars orange suffused scarlet. 75c.
- Arab.** Rich, velvety maroon, free and fine. 25c.
- Aschenbrodel.** Base of petals gold, passing to rose and lemon. 25c.
- Aurora.** Center golden, passing to soft pink, tipped white. See p. 23. 50c.
- Belladonna.** New, salmon red ground, suffused scarlet, blood red tipped. 75c.
- Berlichengen.** Deep crimson carmine shading to bright carmine tips. 25c.
- Bessie Mitchell.** Apricot orange with reddish center. 15c.
- Blitz.** Brilliant geranium lake, narrow petal, fine. 35c.
- Britannia.** Very soft salmon pink, large and free. 25c.
- Burbank.** Deep rich cardinal red, extra fine. 35c.
- Capstan.** Soft salmon, red tinted apricot at base. 20c.
- Caradoc.** Clear yellow, long narrow incurved petal, very large. 50c.
- Clara G. Stredwick.** Shrimp pink, shading to salmon red. 25c.
- Countess of Lounsdale.** Blending of salmon pink and amber. 25c.
- Comet.** Delicate lilac striped with Tyrian rose. 25c.
- Cornucopia.** Soft reddish salmon, long narrow petals, large. 20c.
- Country Girl.** Golden yellow, suffused at points with salmon rose. 25c.
- Columbia.** Vermilion tipped white, fine contrast. 25c.
- Curt Englehart.** New, deep fiery crimson, lighter at tips. 75c.
- Cynthia.** Apricot with white tips and yellow center, fine. 25c.
- Day Dream.** Light amber yellow, suffused salmon red. 25c.
- Diavolo.** Striped with five colors; yellow, white, rose, chocolate, ma-
roon. 50c.
- Dornroschen.** New, carmine shading. See p. 23. 75c.
- Duchess of Hamilton.** Sulphur yellow and rose. See p. 23. 50c.
- Edelweiss.** Dwarf, 18 inches, small, free, white. 15c.
- Effective.** Chamois rose with yellow center, extra fine. 25c.
- Else.** Buttercup yellow, shading to amber and tyrian rose. 25c.
- Exquisite.** Orange scarlet with orange shadings, free. 25c.
- Fairy.** Pure white fine airy petals, incurved, very free. 25c.
- Faunus.** Straw yellow, shaded rosy scarlet, long, narrow petals. 50c.
- Favorita.** Violet rose, tinted yellow at base, perfect and free. 50c.
- Fireworks.** Golden yellow, striped oriental red, extra fine. 50c.
- Flamingo.** Brilliant vermilion, hue of the flamingo bird. 25c.
- Flame.** New, brilliant orange scarlet, very fine form. 35c.
- Flora.** Pure white, large broad petals. 25c.
- Floradora.** Bright blood red, simply a mass of bloom. 35c.
- Forelle.** Lemon yellow, shading to crimson carmine at tips. 25c.
- Foxhunter.** New, bright scarlet, long narrow petal. See p. 23. 75c.
- Frau Hermine Marx.** Silvery rose pink, with lighter center. 25c.
- Gabriel.** Vermilion, edged creamy white, often self colored. 25c.
- Gen. Buller.** Cardinal red, tipped white, striking. 15c.
- Grenadier.** Bright reddish old rose, dwarf, erect plant. 15c.
- Gen. French.** Terra-cotta, faces out boldly, one of our best. 25c.
- Genoveva.** New, pale canary yellow, lightly tinted green. 75c.
- Gold Fasan.** Base chrome yellow, passing to rosy red. 35c.
- Goldland.** New, primrose yellow, best yellow Cactus. See p. 23. 75c.
- Gondola.** New, clear rosy pink, long, incurved petals. See p. 23. 75c.
- Harbor Light.** Vivid orange red overlaid with flame, large. 25c.
- Harmony.** New, salmon red with lighter tips, chamois yellow center. 50c.
- Hazerkind.** Dwarf, mauve pink, free bloomer. 25c.
- Helene.** Dwarf, center creamy

white passing to mauve rose. 25c.

Herzeloide. Delicate rosy-chamois suffused yellow at base. 25c.

Hohenzollern. Rich orange red with golden sheen. 35c.

Horn of Plenty. Deep carmine purple, petal long and twisted. 25c.

H. Shoemith. Carmine red, long needle-like petals. 25c.

H. W. Sillem. Brilliant cardinal red with deeper shadings. 25c.

Igneae. One of the best scarlet Cactus, fine bushy plant, large flowers. 50c.

J. H. Jackson. Brilliant crimson maroon, very free, large. 35c.

Kremhilde. Brilliant pink shading to white center, very popular. 25c.

Leuchtfeuer. Bright blood red with deeper shadings, fine form. 25c.

Libelle. Distinct rich purple, good form. 25c.

Lovely. Delicate violet-rose, with creamy shading, very free. 25c.

Loogaloo. Orange scarlet with carmine shading, fine. 25c.

Lurania. New, orange, terra-cotta, cinnamon. See p. 23. 50c.

Master Carl. Bright saffron-yellow, compact bush. 35c.

Mauve Queen. New, clear mauve, incurved petals. See p. 24. 75c.

Meteor. Delicate flesh striped and spotted Tyrian rose. 25c.

Micado. Deep rich red, long narrow petals. 25c.

Miss Dorothy Oliver. Primrose yellow shading to white tips. 25c.

Mme. Camille Pabst. Amber yellow, suffused salmon rose. 50c.

Modell. New, waxy yellow with plum bush on tips. See p. 24. 75c.

Mrs. Edward Mawley. Very free blooming, clear yellow. 25c.

Mrs. George Stevenson. Bright sparkling yellow, fine cut flower. 25c.

Mrs. F. Grinstead. Rich crimson and purple, large, incurved. 35c.

Mrs. H. J. Jones. Scarlet white tipped, some pure scarlet. 20c.

Mrs. J. Harrison. Rich oriental red, good form. 35c.

Mrs. Henry Wirth. New, rich geranium red. See p. 24. 50c.

Mrs. McMillian. New, grand flower. See p. 23. 50c.

Mrs. J. P. Mace. Delicate blush, almost white, very large. 25c.

Mrs. Winstanly. Large, petals deep scarlet, yellow at base. 35c.

Nelson. Deep crimson shaded magenta, petals interlaced. 50c.

Ortwin. Salmon with rosy hue,

compact plant. 15c.

Othello. New, deepest crimson tinted maroon, large, early. 75c.

Papagai. Yellow base, passing to red with yellow tips. 25c.

Pink Pearl. Mallow pink at base, passing to white at tips. 25c.

Pius X. White with slight sulphur tint. 25c.

Princess Ilse. Center delicate rose, suffused carmine, passing to white on edges. 35c.

Progenitor. Bright carmine, petals divided like staghorn fern. 25c.

Queenie. New, an unusual color all its own of rosy salmon with deep salmon on reverse of petals. 75c.

Reliable. Blending of yellow, brick red and salmon. 25c.

Rev. Arthur T. Bridge. Clear yellow, suffused with rose pink. See p. 24. 75c.

Rheinkonig. The best white Cactus to date. See p. 24. \$1.00.

Roland Von Berlin. Fine scarlet with long stems. 25c.

Rosa Starr. New, rose pink, best pink Cactus. See p. 24. 75c.

Rother. Rich, bright garnet, very fine dark sort. 25c.

Sceptre. Base yellow, passing to mauve rose with salmon sheen. 25c.

Sequoia. Deep saffron yellow suffused red, long incurved petals. 25c.

S. M. Mossaffer Eddin. Rich aniline red, petal long and twisted. 25c.

Spotless Queen. Broad pure white petals. 15c.

Standard Bearer. Rich fiery scarlet, very free. 25c.

Strahlen Krone. Intense cardinal red, one of our best reds. 35c.

T. G. Baker. New, long narrow petals forming very large yellow flower. 50c.

The Pilot. Deep yellow overlaid with terra-cotta, fine. 35c.

Thomas Parkin. The best orange colored Cactus to date. 35c.

Thuringia. Orange scarlet of great size, free, vigorous. 35c.

Tressie. New, grand deep scarlet. See p. 24. 75c.

Uncle Tom. Maroon, almost black, one of the best dark. 25c.

Vater Rhein. New, yellow suffused salmon rose. See p. 24. \$1.00.

Vesuve. Rich geranium lake with deeper shading. 25c.

Volker. Free flowering yellow, medium size. 15c.

Vulcan. New, fiery vermilion or orange scarlet, very free. 75c.

W. Hopkins. Oxblood red, petals often twisted, good size. 25c.

Wiese Dame. New, medium, white with slight blush, fine habit. 75c.

Wodan. New, salmon rose, shaded old gold. See p. 24. \$1.00.

Wolfgang Von Goethe. New, rich

apricot, orange shading. See p. 24. \$1.00.

Wunderkind. Canary yellow, shading to white with flesh edges. 25c.

Zephyr. Distinct shade of rosy pink. 25c.

New Dahlias offered for the first time Originated by Gill Bros.

Oregon Beauty—This new peony-flowered Dahlia is the result of a seedling from William Agneau, probably crossed with Twentieth Century. A giant in size; often 8 inches in diameter, it combines with its rare color, which is a bright fiery scarlet, overlaid with a golden sheen, the most distinct form of any Dahlia yet introduced. The opening flower is like a full decorative bloom, of a deep fiery scarlet; when fully out the color is a shade lighter, a portion of the older petals curving towards the stem, the newer petals coming out nearly flat, giving it a peony form. With its gorgeous golden sheen overlaying the whole flower, its color the brightest scarlet we have yet seen, its enormous blooms held on long stems and produced freely by a vigorous plant, when to all of this is added a noticeable sweet fragrance, we contend there are few, if any, Dahlias that will equal it. We own exclusive stock. Price, \$2.00 each.

Snow Pearl—Decorative form; color a pure waxy white; the whitest Dahlias we have ever seen. Because of its long stems, good keeping qualities and its unusual snow white color, this will be a coming Dahlia. We own exclusive stock. Price, 75c.

Spirit of the Golden West, a grand new show Dahlia; in color a deep saffron yellow, tipped and overlaid with the rich rosy red of the sunset. Flowers of good size, full and double and held boldly up on long, stiff stems. It will last a week as a cut flower. No description can give you an idea of the beauty of this Dahlia. Each 75c.

J. J. Johnson.—New, decorative Dahlias of great merit. The large, perfect blooms are held boldly facing upwards on long stems that grow above the foliage. Color of the flowers is a rich maroon, occasionally marked with garnet. The plant is compact and broad and simply loaded with blooms. We believe this is one

of the best maroon Decorative Dahlias to date. Price, 75c each.

Multnomah.—Grand, new Decorative Dahlia. The center is clear yellow, shading to orange, tinted with rose. The petals are broad and curve to the stem, making a full globular flower. Makes a fine bushy plant loaded with these large blooms. One of the best of its color. Price, each 75c.

Crazy Quilt.—Decorative. One of the oddest Dahlias ever introduced. Hardly two flowers come alike; some are pure sulphur yellow, some yellow with white centers, others pure white, some white with yellow collar and again others white with yellow markings through each petal. Often borne in clusters, making the plant just a mass of bloom. Flowers medium size, held on long stems. Price, 75c each.

Poppy King.—New Decorative, with flowers which somewhat resemble a large double poppy and having a poppy scent. Well formed bushes, loaded with rich blood red blooms. Each 75c.

Tillamook.—A companion to that grand old Dahlia, Grand Duke Alexis, it differs in color, being a delicate blush, deepening at the tips to rose pink. Its pleasing color, combined with its large size and free blooming habit will make this a prize winner. Price, 75c each; post-paid.

Splendid.—This is a single Dahlia similar to the Twentieth Century, but of a far richer color, being a deep rich crimson marked at tips with white. This attracted much attention in our grounds last summer. Price, each 35c.

OTHER NEW DAHLIAS OF GREAT MERIT.

Beloit.—Decorative, with cactus-like petals; immense purplish garnet flowers borne on long stems. One

of the showiest Dahlias that have been brought out. Price, 75c each.

Delice—Decorative; one of the most delicate colors of any Dahlia; a soft rosy pink with white marking in the petals. Must be seen to be fully appreciated. Each 50c.

Le Grand Manitou—The best striped Decorative Dahlia to date; gigantic blooms, striped and spotted with deep, reddish violet on white ground color. Held well above foliage on long, stiff stems. Price, 75c each.

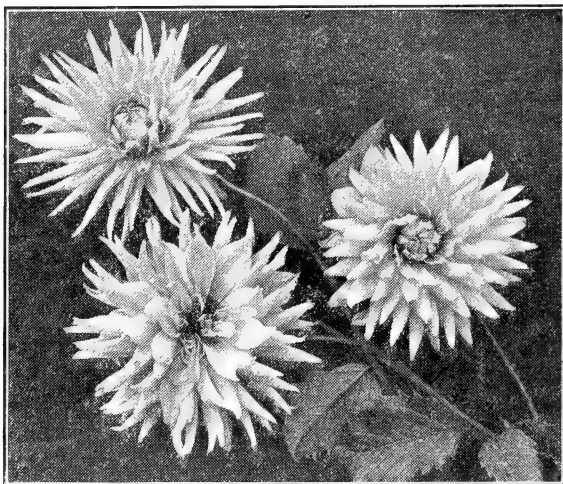
Jeane Charmet—Large Decorative; a pleasing shade of violet-rose on a lighter ground. This flower, with its fluffy, graceful appearance, attracted much attention. Very free flowering and vigorous. Each 50c.

Giant Edelweis—This immense, pure waxy white, cactus, Paeony Dahlia is one of the best flowers to

date. It was one of the big attractions in our field last summer, with its long white and pointed petals setting off its golden heart. It, indeed, is a worthy Dahlia for any list. Price \$1.00 each.

Giesha—This new Paeony Dahlia is probably unequaled in size by any Dahlia; the center is yellow, shading to variations of scarlet and gold; as the season advances some of the flowers will become clear yellow. Very free flowering and vigorous. The petals above the center are twisted and curved, giving a graceful appearance. Price, \$1.00 each.

Glory De Paris—Claimed to be the largest of all show Dahlias; splendid blooms borne upright on good, substantial stems; color a deep, rich purple-scarlet, with velvety reflex. A splendid cut flower. Price, each \$1.00.



TYPES OF CACTUS DAHLIAS

GILL'S PAEONY DAHLIAS.

Cleopatra—Rich, ornamental red, marked with yellow.....	25c
Duke Henry—Dark crimson, petals twisted	35c
Germania—Strawberry red, with pointed petals	25c
Giant Edelweis—New, cactus, petals of pure waxy white. (See p. 28.)..	\$1.00
Geisha—New, organge scarlet, marked with yellow. (See p. 28.).....	\$1.00
King Leopold—Creamy yellow, shading to white; free.....	35c
Louise Perrier—Crimson-carmine, suffused white, yellow at base.....	25c
Oregon Beauty—Originated by Gill Bros. (See p. 27).....	\$2.00
P. W. Jansen—Rosy salmon, shaded with yellow; long stems.....	50c
Paul Kruger—Red, marked with pink and white; very free.....	35c
Philadelphia—Cactus Paeony; reddish purple; suffused with white....	50c
Queen Emma—Hollyhock pink, inner petals banded with gold.....	35c
Queen Wilhelmina—Large, pure white petals, twisted and curled.....	35c

GILL'S DECORATIVE DAHLIAS.

Admiral Schley—Crimson garnet, with white band through petals....	25c
Beloit—Gigantic blooms of rich purplish garnet. (See p. 27.).....	75c
Black Beauty—Velvety maroon, almost black	20c
Blue Oban—Lavender blue of large size; very free	35c
Bronze Beauty—Bright coppery orange; very free	20c
Catherine Duer—Deep, rich, glowing red; fine in artificial light.....	20c
Cuban Giant—Immense ball of bright maroon	25c
Delice—New, lowing soft rose pink. (See p. 28.).....	50c
Eloise—Fancy, white tinted flesh, each petal edged with purplish gar- net; often self colored; very free.....	25c
Evadne—Soft primrise, shading to white with blush edges.....	25c
Fire Rain—Free flowering; cardinal red	25c
F. L. Bassett—Carmine purple, borne in clusters	20c
Gigantea—The only true cream-colored Dahlia; gigantic size	50c
Gettysburg—Large, deep glowing scarlet; not quite full	25c
Jack Rose—Brilliant crimson, fading at tips; fine for hedging.....	25c
Jeane Charmet—One of the best, pinkish lilac (See p. 28).....	50c
Juno—Reddish brown, striped with crimson and maroon; very free....	35c
Kate Haslem—Cactus decorative form; wine purple color.....	25c
King of Cardinals—Large cardinal red flowers	25c
La France—New, gigantic blooms, rose pink, like La France Rose....	50c
Le Grand Manitou—A new giant, white, striped violet red. (See p. 28) ..	75c
Lucille—Old gold; very free.....	25c
Mattie Serfin—Orange and buff; very free	25c
Maid of Kent—Cherry red, tipped white; often solid red.....	15c
Mme. A. Lumiere—White with violet red tips; very showy	50c
Mrs. F. F. DeWitt—Primrose yellow; good size	25c
Mrs. Roosevelt—Delicate silvery rose of giant size; very free.....	35c
Mrs. Stancombe—Straw yellow; suffused amber, tipped blush.....	25c
Navajo—Rich, velvety red; very dark; free flowering	25c
Oban—Mauve, shaded fawn; an unusual color; very free	20c
Olympia—Fancy, rosy pink, striped with rich crimson	25c
Orange King—A rich, fiery orange scarlet; very free	25c
Prof. Mansfield—Rich yellow, white tips, reddish center	35c
Progress—Fancy, soft rosy lake, splashed with crimson	25c
Perle De Lyon—Pure white of good size; petals divided at tips.....	25c
Poppy King—Originated by Gill Bros. (See p. 27).....	50c
Sacajawea—Orange, shaded red; large and free	25c
Sylvia—Pink with lighter center.....	25c
Souvenir de Gustave Doazon—Probably the largest of all Decorative Dahlias. Light orange scarlet; rather flat flower	35c
Snow Pearl—Originated by Gill Bros. (See p. 27.).....	75c
William Agneau—Rich carmine, broad petal, reversing to stem.....	15c
Wilhelm Miller—Aniline red, suffused with purple	20c
Yellow Colosse—The largest yellow decorative; pure primrose	50c

GILL'S SHOW DAHLIAS.

A. D. Livoni—Clearest pink known in Dahlias; very free.....	15c
Arabella—Light sulphur yellow, shaded peach blossom	20c

Client—Brilliant velvety crimson.....	20c
Colonist—Coral red; often with two petals in one	15c
Dreers White—A pure white quilled; one of the best.....	35c
Dutchess of Cambridge—White, tipped solferino red	20c
Emily—Lavender, suffused with white; large and free	25c
Floranora—Deep, purplish maroon, quilled petals.....	20c
Frank Smith—Maroon, almost black; often tipped white	25c
Glorie De Paris—Largest of all show Dahlias. (See p. 28).....	\$1.00
Grand Duke Alexis—White, edged with lavender blush; very large....	35c
Hero—Fine analine red	20c
John Thorpe—Light shade of pink; free	20c
Kaiser Wilhelm—Giant of deep yellow tipped cherry red.....	25c
Le Colosse—Giant size; watermelon pink; very free flowering.....	50c
Miss May Loomis—White suffused with soft rose	15c
Miss Browning—Pure yellow; often with white tips	20c
Miss Dodd—Canary yellow, with slight blush at edges	20c
Mrs. Hartong—Deep orange, tipped with pink; large	25c
Pendent—Crimson maroon	20c
Susan—New, delicate shell pink; free blooming	25c
Spirit of the Golden West—Originated by Gill Bros. (See p. 27.).....	75c
Thomas White—Purple garnet, shaded black; very fine	25c
Yellow Bird—Primrose yellow; divided tips; half decorative type....	20c

SINGLE DAHLIAS.

Jack—Fiery scarlet; base overlaid with golden yellow; free	20c
Twentieth Century—Rosy crimson, shading to white	25c
La Fusse—Collerette Dahlia; oxblood red, with white tipped collar...20c	

We can also furnish single Dahlias in yellow, white and red at 15c each, or \$1.00 per dozen, postpaid.

POMPON DAHLIAS.

Crimson Beauty—Perfect little ball of brilliant scarlet	10c
May Clift—Rich plum color.....	10c
San Toy—White tipped with Tyrian rose.....	10c
White Aster—Best white, fringed petals	10c
Little Herman—Deep red, tipped white	10c

CANNAS.

Allemania—Foliage green; flowers lemon yellow; spotted terra cotta.
Black Beauty—Foliage green, with brownish tint; scarlet flowers.
David Harum—Foliage dark bronze; flowers orange scarlet.
King Humbert—Bronze foliage; mammoth orange scarlet blooms.
Louisiana—Glossy green foliage; orange scarlet flowers.
Musafolia—Largest size; dark green leaves 2x5 feet in size.
Pres. Meyer—Dark bronze foliage; flowers bright scarlet.
Wyoming—Deep bronze foliage; golden orange flowers.

Any of the above Cannas in good, strong bulbs at 15 cents each, \$1.25 per dozen, postpaid.

GERANIUMS.

Will furnish any color in a good standard sort at 15 cents each, or \$1.50 per dozen, postpaid.

GLADIOLUS.

We offer a splendid mixture of these in various colors at 40 cents per dozen. We will furnish named varieties if so desired.

HARDY PHLOX.

Of very easy culture and should be more planted; do best planted during the fall, about November.

Athis—Deep, clear salmon; large panicules.

Coquelicot—Bright orange scarlet.

Huxley—Rich lavender.

Jeanne d'Arc—Pure white late sort.

Kossuth—Rich, deep purple.

Masculata—Very tall, bright reddish; almost purple.

Miss Lingard—Pearly white with faint pink eye; very early.

Niobe—Darkest of all Phlox; very fine.

Peachblow—Delicate peachblow pink.

R. P. Struthers—Clear cherry red, with salmon shades; red eye.
 Price of any of the above is 15c each; 2 for 25c, postpaid, or by E.
 or F. \$1.00 per dozen.

HARDY FLOWERING PLANTS.

- Hydrangea, Snow of the Hills**—Large trusses; pure white; 2 year at...20c
Hydrangea, Paniculata—White tinted with pink, 2 years at.....25c
Honeysuckle, Hall's Japan—Fragrant; yellow and white flowers; 2 yrs...25c
Honeysuckle, Halls Japan—Fragrant; yellow and white flowers; 2 yrs...25c
Chinese Wistaria—Long, drooping bunches of purplish blossoms; 2 yr.25c
Tritoma Pfitzerri;—Rich orange, scarlet spikes; August to November...25c
Achelea, Pearl—Very prolific of pure white blooms in clusters.....15c
Hardy Carnation, Crimson King—Hardy anywhere; crimson flowers;
 2 years 20c
Carnations—White perfection, O. P. Bassett, scarlet; J. Whitcomb Riley,
 yellow; Enchantress, pink, at 10 cents each.
Delphinium, Gold Medal Hybrids—Light blue shades; 1 year plants...15c
Canterbury Bells—Mixed, Cup and Saucer type; 1 year at.....15c
Japanese Flowering Quince—Strong two-year plants; scarlet flowers...25c

GILL'S NEW AND STANDARD ROSES.

These are what are generally called two-year bushes, or cuttings rooted in the fall and planted in the field in the spring and cultivated all summer. Many people make the mistake of planting bushes that are too large. With the large bushes the small fiber roots—that are the real feeders have grown so far away from the plants that they are cut off in digging, while the smaller plants, such as we offer below, can be dug without destroying the fiber roots. These plants have made a growth of from one to two feet high, and have good roots. Furthermore, we fill our orders right from the field, so the roots are fresh. We guarantee our roses true to name and will replace all plants should they come untrue. We, however, are not responsible for plants dying after being set out, as all plants will be sent out in good condition, and if they do not arrive so, you should notify us at once.

- Anna Muller, the pink baby rambler**.....25c
Alice Roosevelt, beautiful bright pink35c
Andre Gamon; pure rosy carmine, large, full.....50c
Aurora; bright pink; very double25c
Antoine Rivoire; creamy white with pink tinge25c
Avoca; long pointed buds, crimson scarlet.....50c
Blue Rambler; steel blue flowers in clusters.....50c
Bride; grand white rose.....25c
Bridesmaid; grand pink rose25c
Beauty of Staplesford; bright, rich rosy crimson.....25c
Bon Silene; deep carmine; very fragrant25c
Baby Dorothy; deep pink baby rambler25c
Baby Rambler; dwarf plant; bright red flowers25c
Cloth of Gold; clear yellow climber25c
Climbing Kaiserine A. Victoria; similar to K. A. Victoria.....35c
Climbing Killarney; same form as Killarney.....35c
Climbing Caroline Testout; clear shell pink.....35c
Caroline Testout; the Portland rose25c
Countess of Gosford; shaded salmon pink, rose and yellow.....35c
Christine De Noue; glowing crimson25c
Col. R. S. Williamson; satiny white with blush center.....35c
Celia; pure satin carnation pink25c
Clara Watson; salmon pink35c
Catherine Mermet; clear rosy pink; fine buds25c
Countess of Derby; salmon center shading to pink.....25c
Dorothy Perkins; climber; double shell pink.....25c
Dean Hole; light carmine shade salmon.....35c
Dutchess De Brabant; bright salmon pink.....25c
Elizabeth Barnes; salmon rose, fawn center50c
Etoile De Lyon; fine yellow bedder25c
Florence Pemberton; creamy white shaded peach35c

F. R. Patzer; creamy buff, reverse delicate pink.....	75c
Francois Bubrieul; deep vivid crimson	25c
Frau Karl Druski; largest and best pure white.....	35c
Freiherr Von Marschall; bright carmine rose; large.....	25c
Gainsborough; climber; white tinted flesh	25c
Gen. Jack; bright red.....	25c
Gen. McArthur; new, deep rich red	35c
Gen. Robt. E. Lee; orange yellow shaded white.....	25c
Glorie Lyonnaise; large, creamy white	25c
Golden Gate; white tinted pink	25c
Grus An Sangerhausen; reddish scarlet; long buds	35c
Helen Gould; fine bright red	25c
Harry Kirk; deep sulphur yellow; long buds	50c
Hector McKinze; dark pink changing to silvery carmine.....	50c
Hugh Dickson; brilliant crimson, shaded scarlet	35c
Kaiserine Augusta Victoria; white tinted cream	25c
La France; popular pink	25c
Lyon; salmon pink and yellow blended	75c
Mrs. A. R. Wadell; long pointed buds; deepest apricot	50c
Mme. Jenny Guilemot; saffron yellow, opening pale yellow.....	35c
Mamie; climber; fawn with pink heart	35c
Marie Van Houtte; straw yellow, flushed with crimson.....	25c
Marechal Niel; climber; golden yellow	50c
Pres. Taft; new; shining deep pink; fine	35c
Philadelphia Rambler; dark crimson clusters	25c
Prince Camelle De Rohan; deepest crimson	25c
Prince of Bulgaria; coppery yellow; golden center.....	25c
Pink Cochet; bright pink of fine bud form	25c
Papa Gontier; rich bright red	25c
Richmond; pure bright scarlet	35c
Rainbow; striped pink and crimson	25c
Rambler; crimson; large crimson clusters	25c
Rhea Reed; new; fine rich red	35c
Rose Gubert; new; long buds; canary yellow	35c
Rosemary; large; double; silvery pink	35c
Safrano; saffron shaded yellow; fine buds.....	25c
Souvenir Pres Carnot; delicate fawn; fine	35c
Souvenir of Wooton; large velvety red.....	35c
Souvenir De Catherine Guillott; coppery yellow, shaded orange.....	25c
Souvenir De Pierre Notting; orange yellow bordered carmine.....	35c
Sunset; golden sunset color	35c
Ulrich Brunner; glowing scarlet crimson	25c
Viscountess of Folkstone; white tinted fawn	35c
White Maman Cochet; creamy white, bordered pink	35c
White La France; fawn white	25c
White Killarney; long buds; pure white	35c
White Malmaison; white shade, lemon yellow	25c
William Shean; pink veined with ochre	35c
William Allen Richardson; climber; deep orange yellow	25c
William R. Smith; creamy white with pink shadings.....	50c
Yellow Cochet; yellow flushed with rosy red	25c

We have other Roses. If you wish any variety not listed, please write us.

PAEONIES.

Each—Postpaid.

Asa Grey —Petals salmon flesh, center light pink, flaked with carmine.....	50c
Bunch of Perfume —Bright vivid rose color; very fragrant	50c
Felix Crousse —Large, clear, brilliant ruby red; best red.....	50c
Festiva Maxima —6 to 8 inches in diameter, snow white.....	50c
Gigantia —Immense, clear pink, with silvery sheen.....	75c
Golden Harvest —Guard petals pink, passing to yellow and rose.....	50c
La Tulipe —Delicate rose, changing to white.....	50c
Marie Lemoine —Delicate ivory white; massive late blooms.....	50c

These are good, strong divisions, which will generally make a few blooms the first year. Best to plant in the fall.

VEGETABLE PLANTS

CABBAGE.

Early Sorts ready Jan. 1st to May 1st; field grown; 15c doz; 60c per 100; postpaid. By E. or F., 45c per 100; \$3.75 per 1,000.

Late Sorts ready June 1st to Aug. 1st; healthy, clean, strong plants with muddled roots; 15c doz; 50c per 100; postpaid. By E. or F., 40c per 100; \$2.00 per 1,000.

CAULIFLOWER.

Vetches Autumn Giant, Mammoth White Broccoli and Early Large White French Broccoli at 15c per doz. or 60c per 100, by mail postpaid. By E. or F., 50c per 100; \$4.00 per 1,000. June 1st to July 25th.

Best Early, Dry Weather, California Pearl, for early. Jan. 1st to May 1st, and late planting July 1st to Aug. 1st. Per doz. postpaid, 20c; 75c per 100 postpaid. By E. or F., 65c per 100 or \$5.50 per 1,000.

Brussel Sprouts and Kohl Robi and Table Kale at late cabbage prices.

Pepper Plants at 15c per doz; 75c per 100; postpaid. By E. or F., 65c per 100, or \$5.00 per 1,000.

Tomato Plants—20c per doz; \$1.00 per 100. By E. or F., 90c per 100; \$5.00 per 1,000.

Celery Plants—25c per doz., postpaid. By E. or F., 75c per 100; \$6.00 per 1,000. Non transplanted 50c per 100; \$5.00 per 1,000.

FLOWER PLANTS FROM SEED.

These are spring sown plants, hot bed or cold frame.

Asters Any sort, 10c per doz; 60c per 100; postpaid.

Canterbury Bells—10c per dozen; 50c per 100; postpaid.

Carnations—15c per doz; Giant Marguerite, 20c per doz.

Heliotrope, Delphiniums, Pinks, Hollyhocks—Any sort we offer at 15c per doz; 60c per 100; postpaid.

Pansies Steele's Mastodon at 25c per doz. Gill's Giant, 15c per doz; fall grown, 20c per doz.

Salvia, Splendeus at 20c per dozen; Patens, blue, at 25c per doz; postpaid.

Sweet William, single, 10c per doz; double, 15c per doz.

Verbena and Zinnias—Any sort offered at 15c per doz.

GRAPE VINES.

Two-year Concord and Niagara at 15c each, postpaid; or \$1.00 per doz; \$5.00 per 100.

RHUBARB ROOTS.

Victoria—Good roots, 20c each; postpaid. By E. or F., \$1.50 per doz.

GILL BROS. MAY

BE REACHED BY

PHONE—TELE-

PHONE TABOR 2683.

DAHLIAS FOR PRESIDENT TAFT.

At the grand banquet given President Taft in Portland, last October, we furnished 3000 Dahlia blooms for decorations in the Commercial Club rooms and the banquet table, thus proving the Dahlias to be one of the very best decorative flowers. You will make no mistake in getting interested in Dahlias, as they, together with the Rose, will be the leading flowers for years to come.

GILL BROS. SEED CO.

PORTLAND, ORE. R. 1

OREGON
GROWN
SEEDS

OUR GUARANTEE

We guarantee all the seeds, bulbs, plants, etc. we send out to be true to name and will be responsible for the amount of the purchase price only. We request that planters keep our seeds marked in the field to avoid confusion with other seeds. Seeds of the very best vitality often fail to germinate from too deep or too shallow planting or from adverse weather conditions, so we do not guarantee them to germinate and we will be in no way responsible for the crop.

DAHLIAS
ROSES
PHLOX

Name.....
LADIES WILL PLEASE PUT THE PREFIX MRS. OR MISS

Post Office..... Box.....

Station..... Rural Route.....
IF DIFFERENT FROM P. O.

County..... State.....

Date..... Amount Enclosed.....

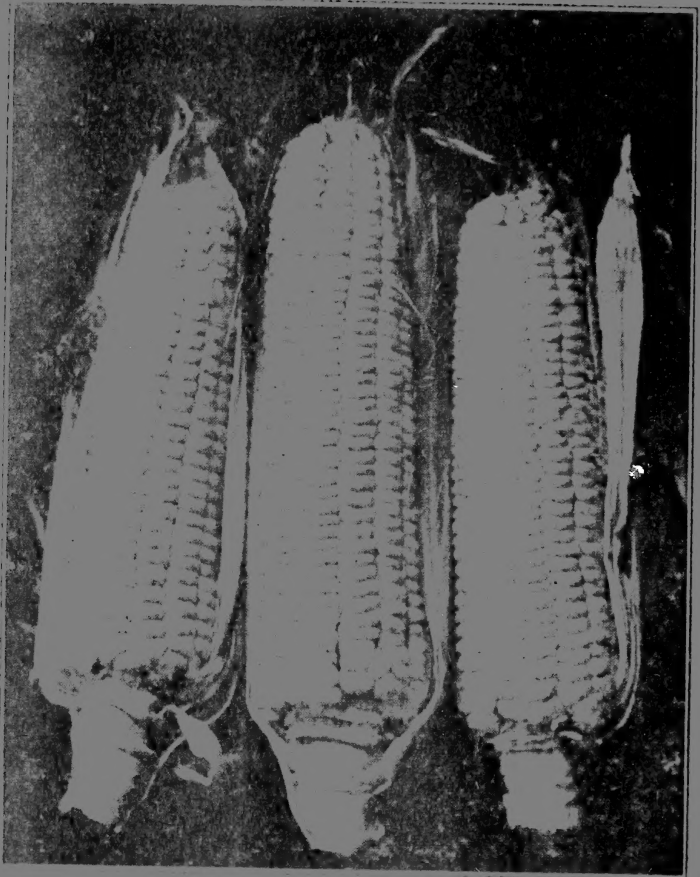
Forward by.....
STATE IF WANTED MAIL, FREIGHT, EXPRESS OR STEAMER

Are you a Market Gardener?..... Have you used our Seeds before?.....

No.....
Amt.....
Rec.....
Sent.....
O. K. by.....
Card sent.....
Complete.....

DON'T FORGET WE ARE DAHLIA SPECIALISTS

QUANTITY	NAME OF ARTICLES WANTED	AMOUNT	



GIL'S PORTLAND MARKET SWEET CORN